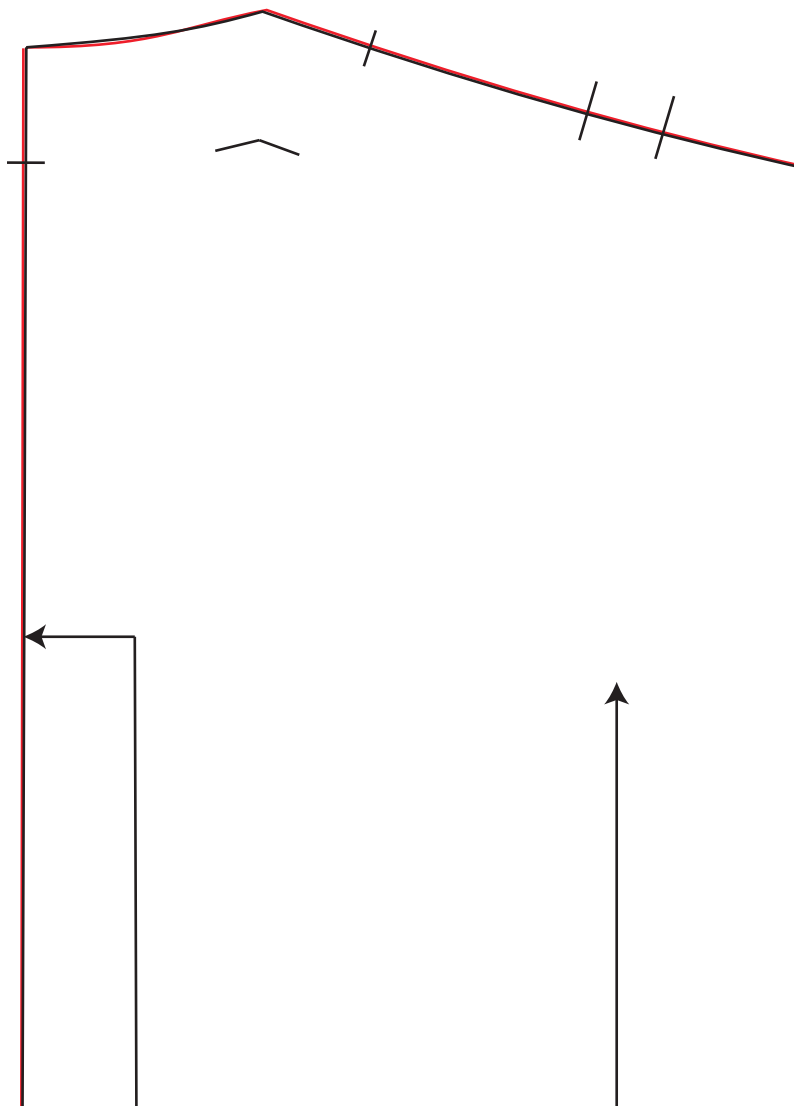


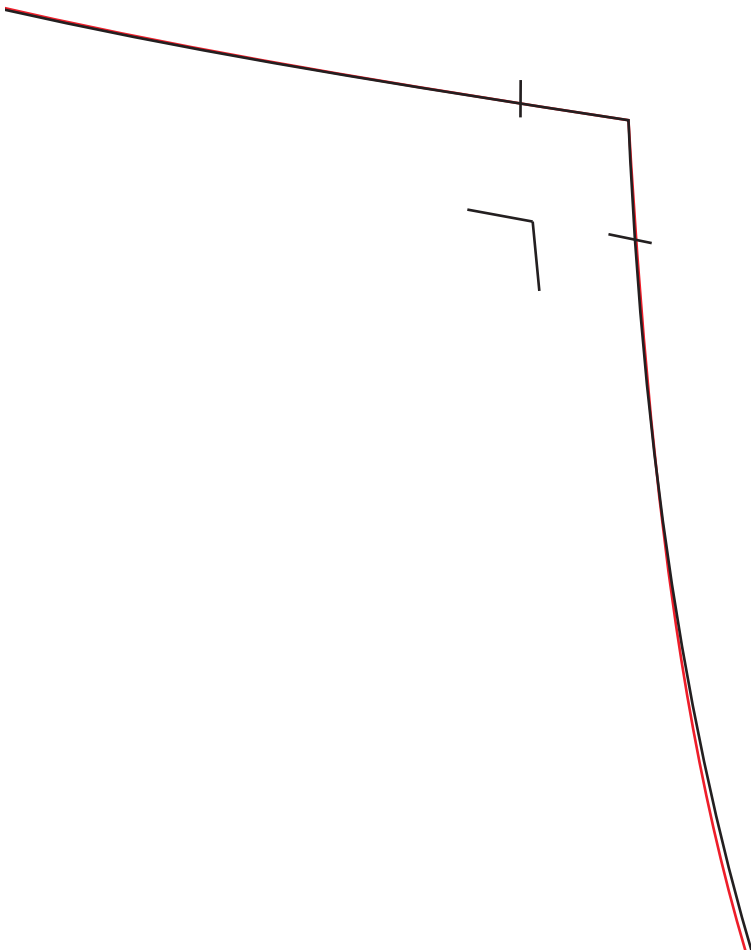
making know how



Corduroy jacket



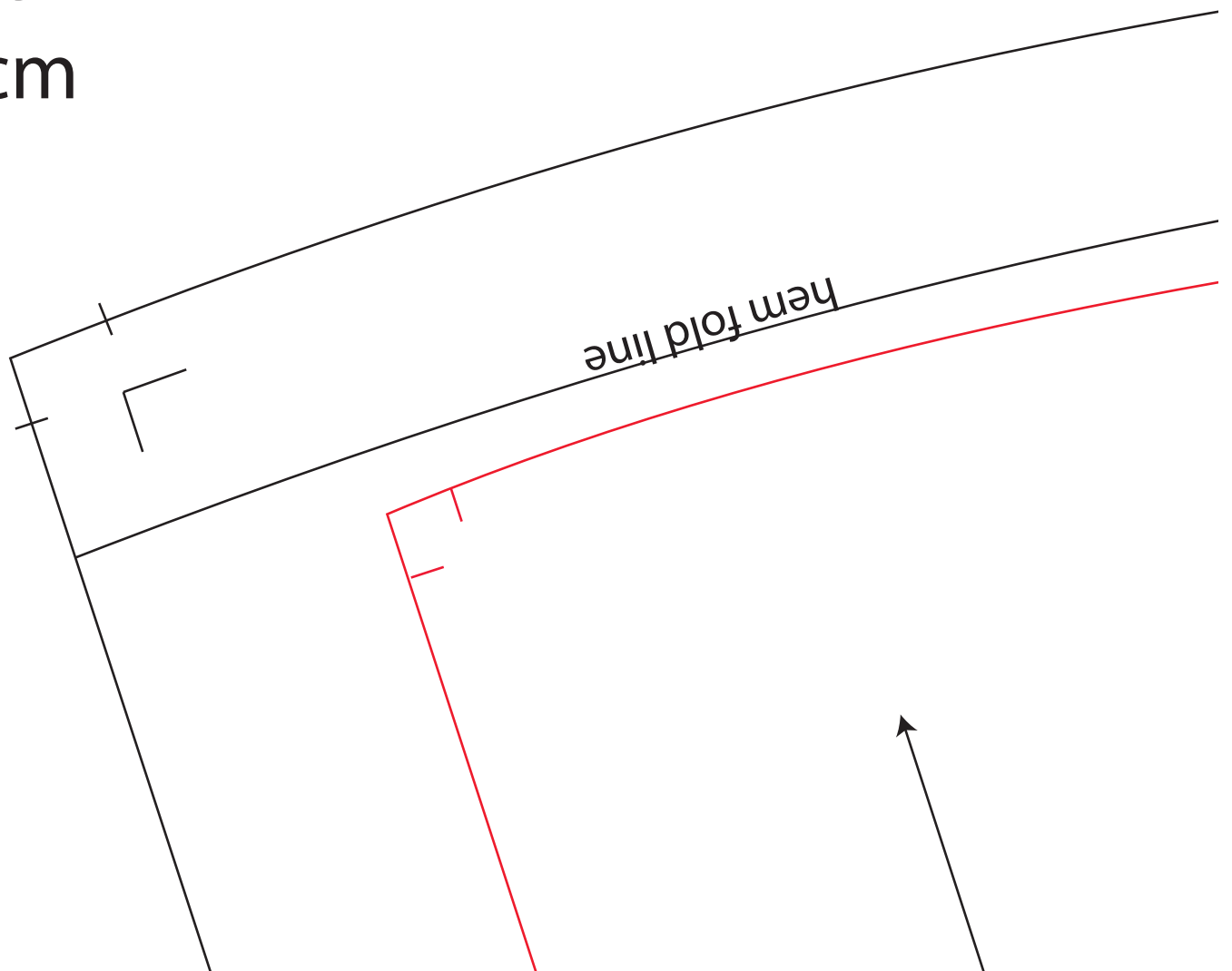
Pattern to fit bust size 91.5cms, wa
equivalent to an M&S
Back neck to hem =

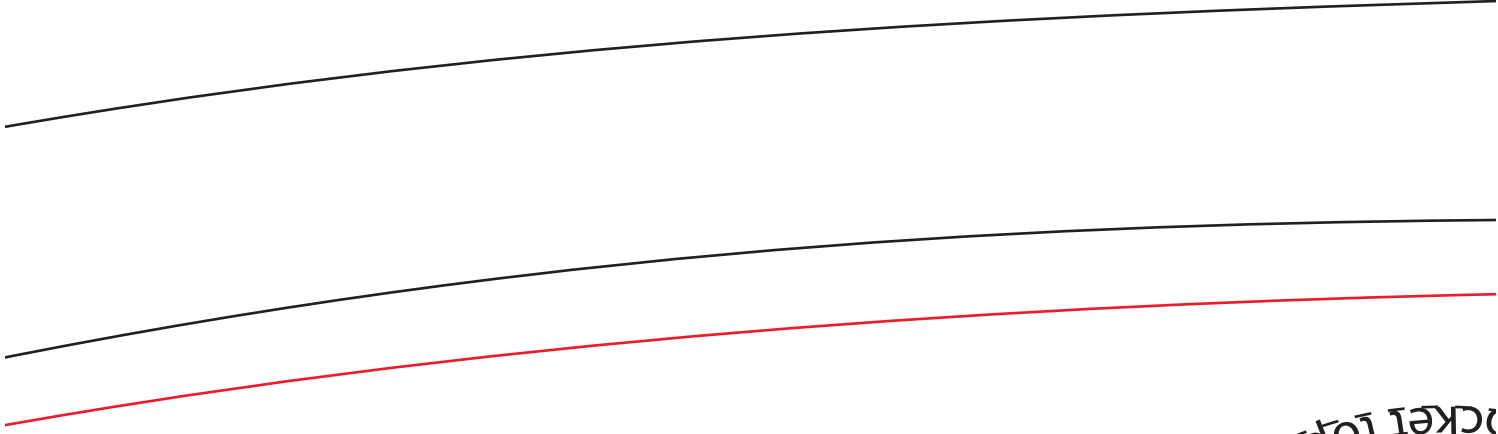


Waist 74cms, hip 99cms

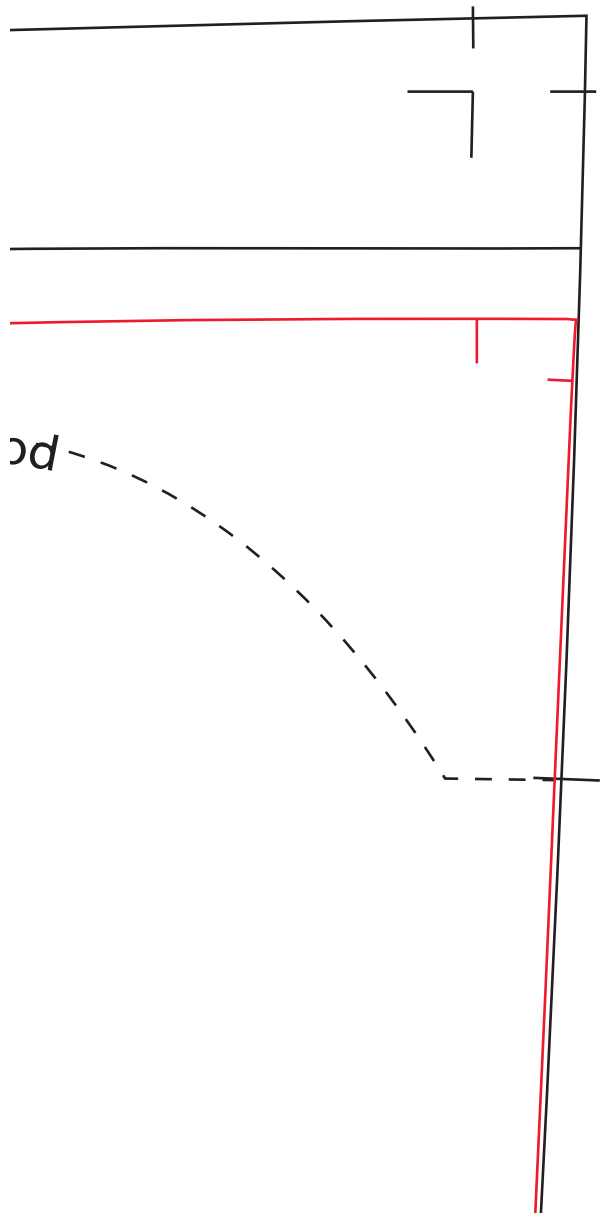
US size 12

Length: 66cm





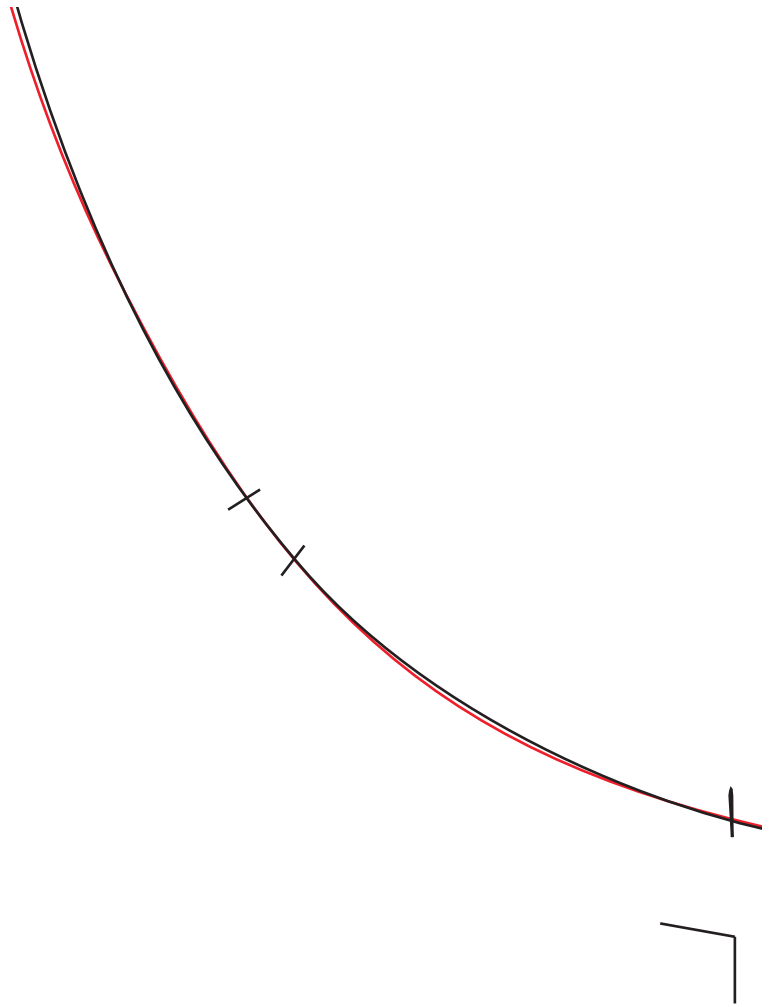
ocket topstitching line



straight grain

DIACK

centre back place on fold



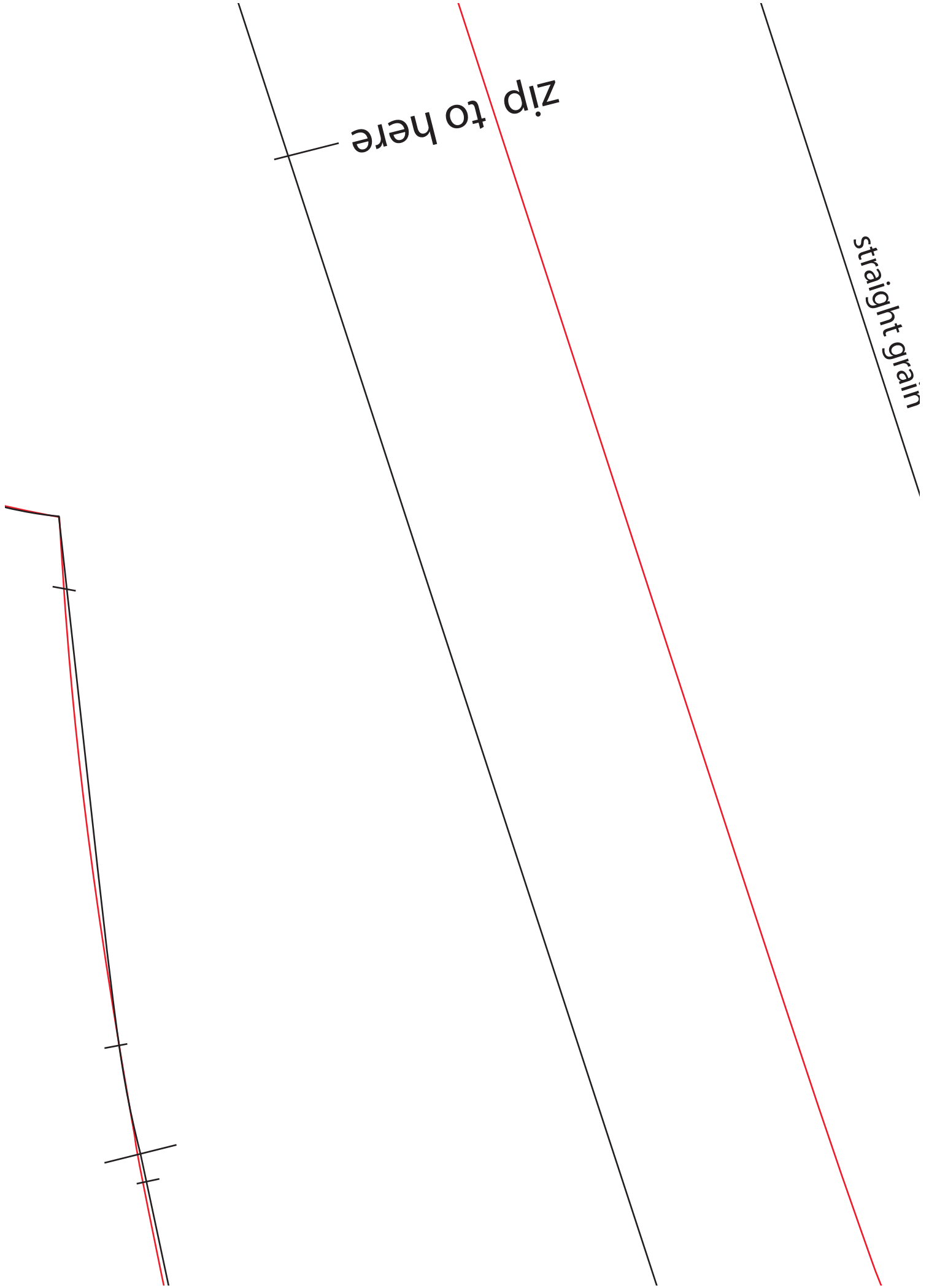
back jacket size 12

cut 1 on centre back fold

+

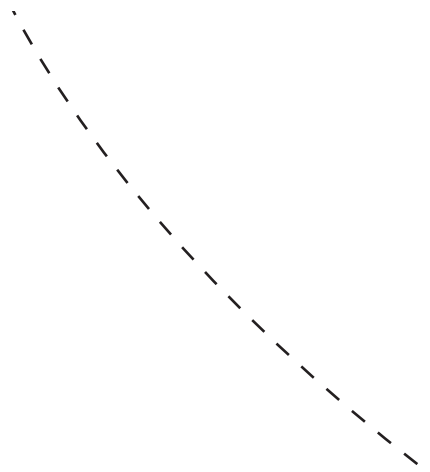
cut 1 lining on centre back fold

1 INEC — cut main pattern

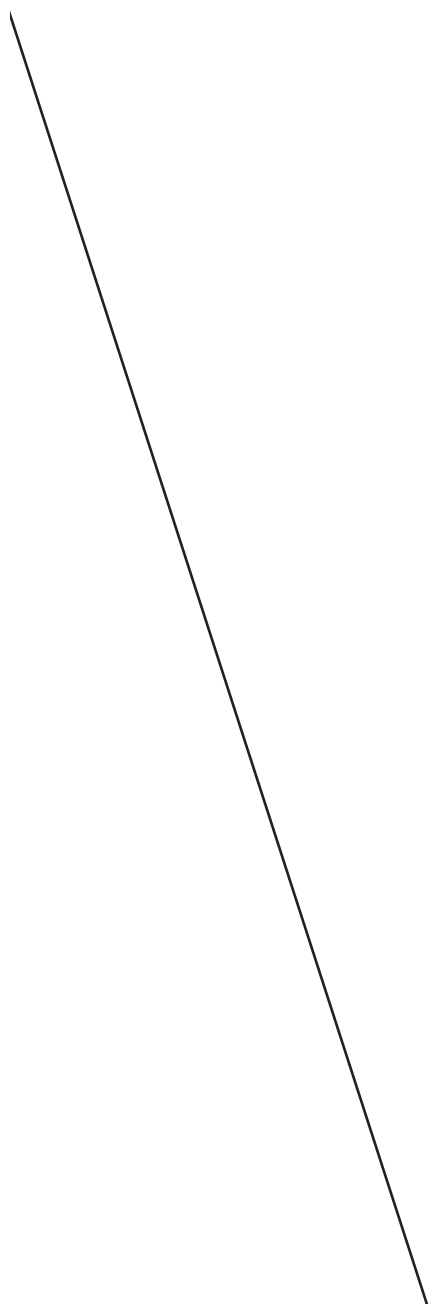


zip to here

straight grain

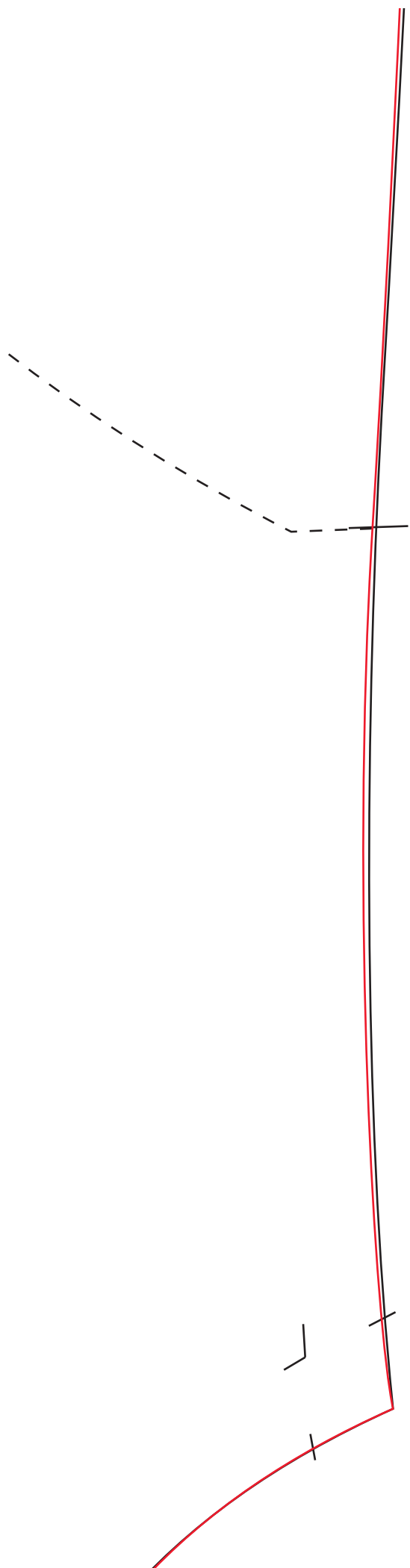


;

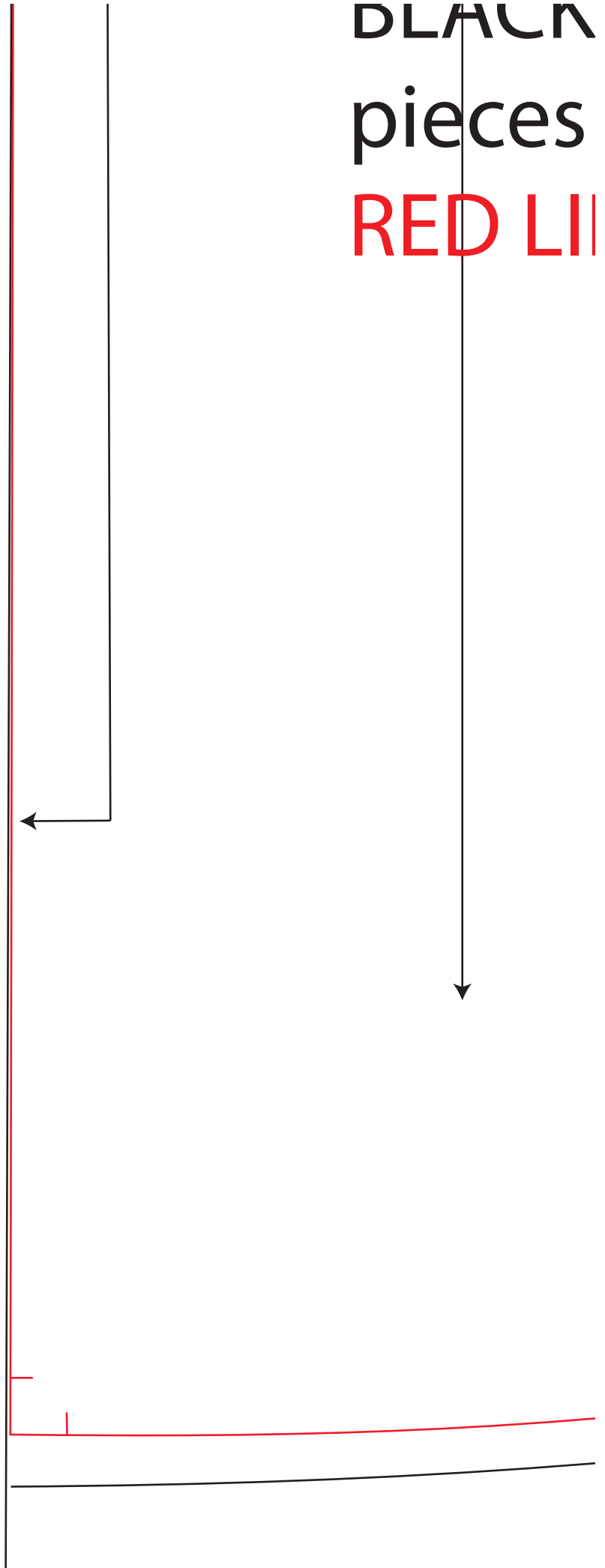


10cm x 10cm print size
check box

;



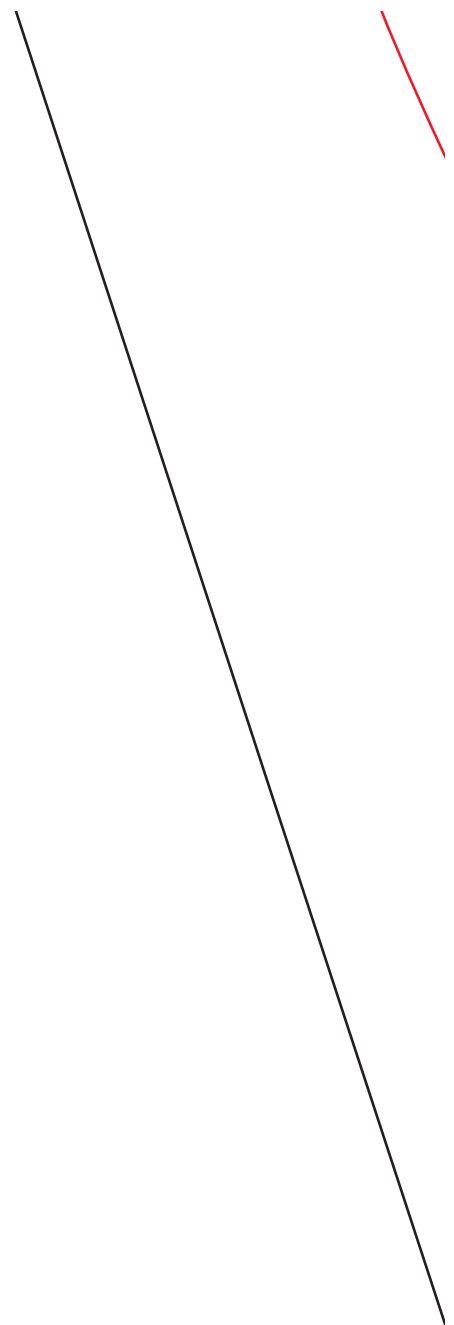
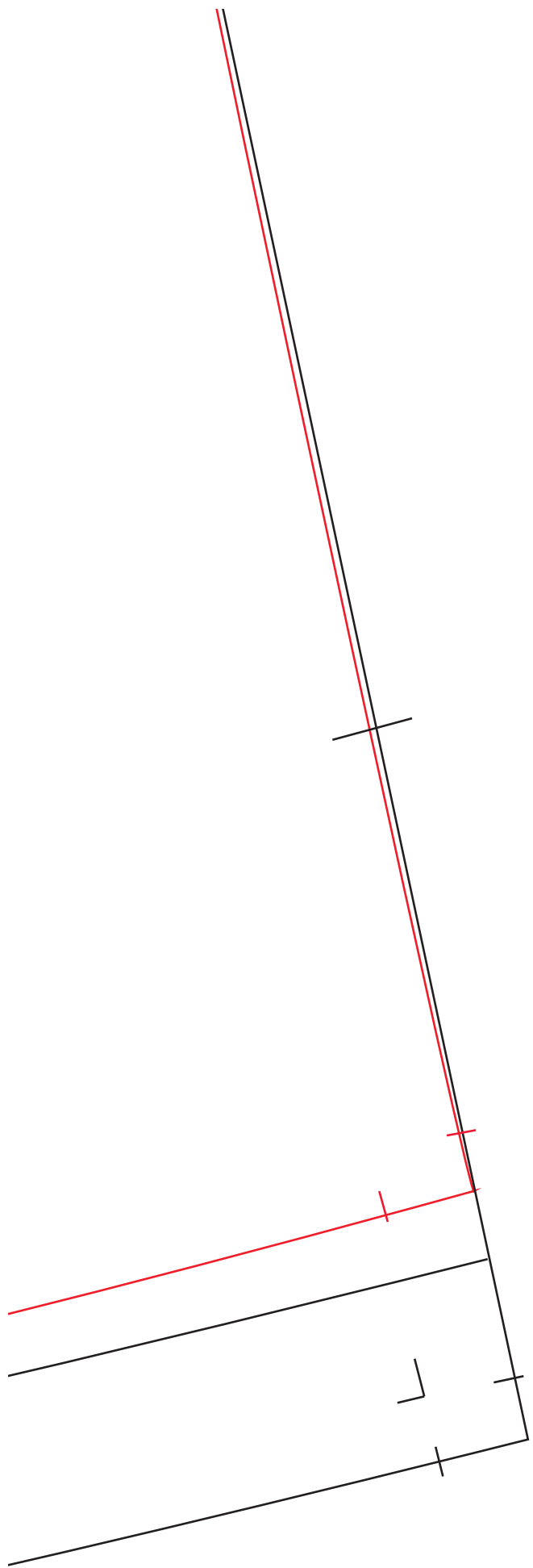
BLACK
pieces
RED LII



LINES = cut main pattern

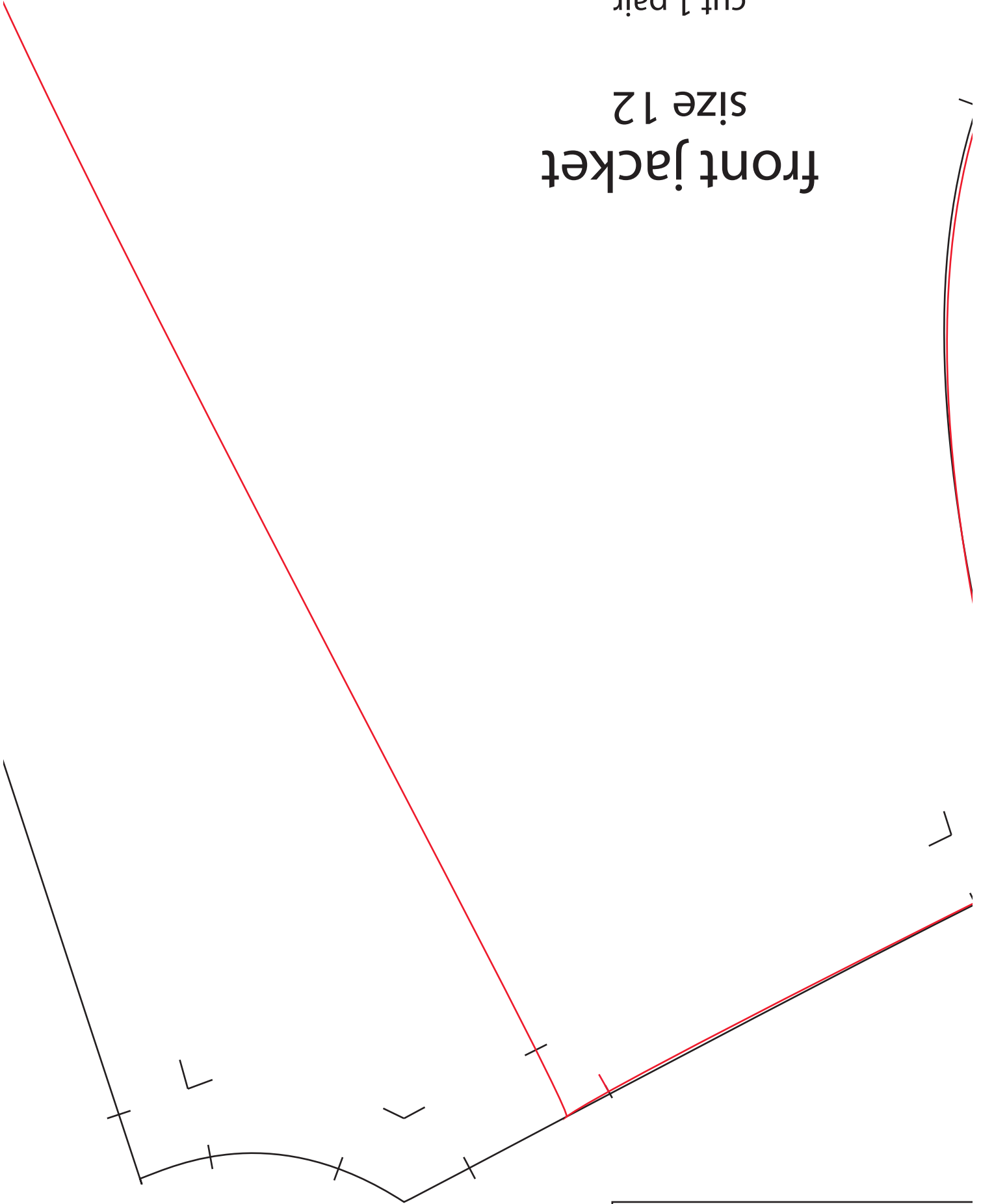
NES = cut for lining pieces



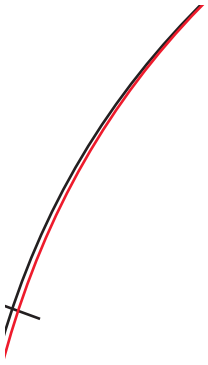


front jacket size 12

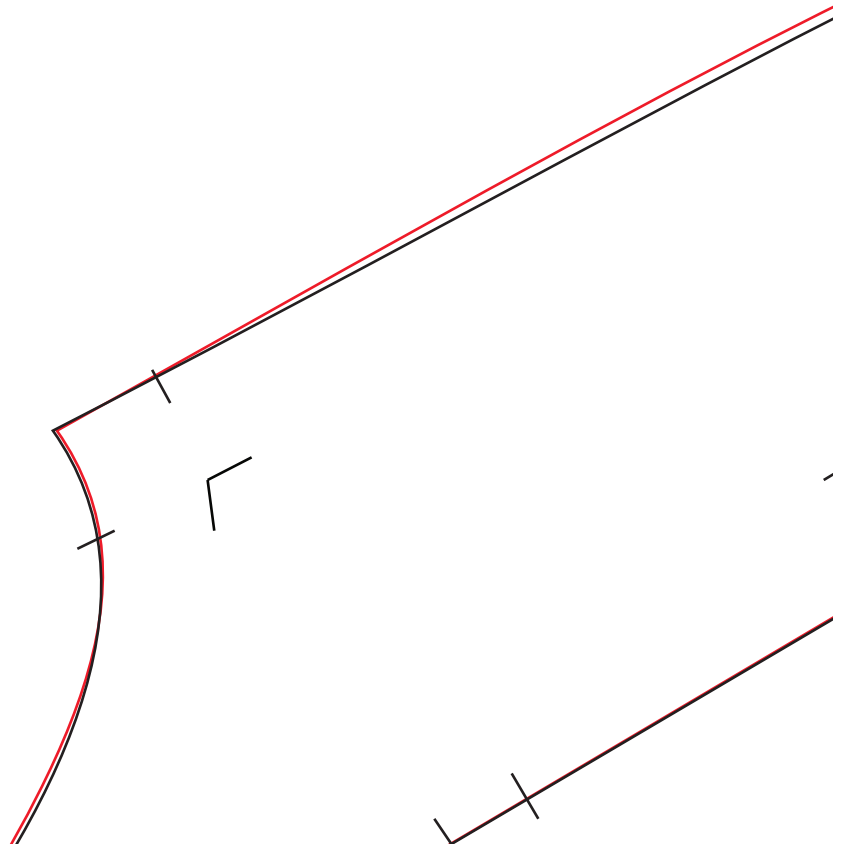
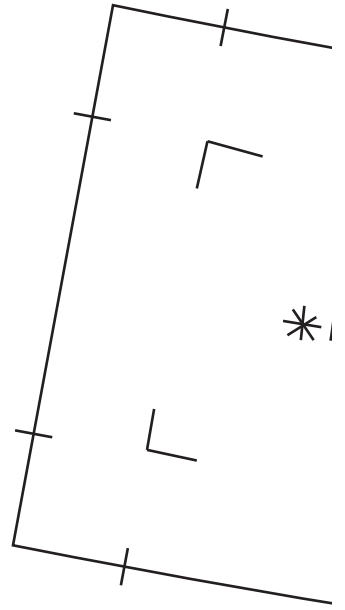
cut 1 pair
+
cut 1 pair lining

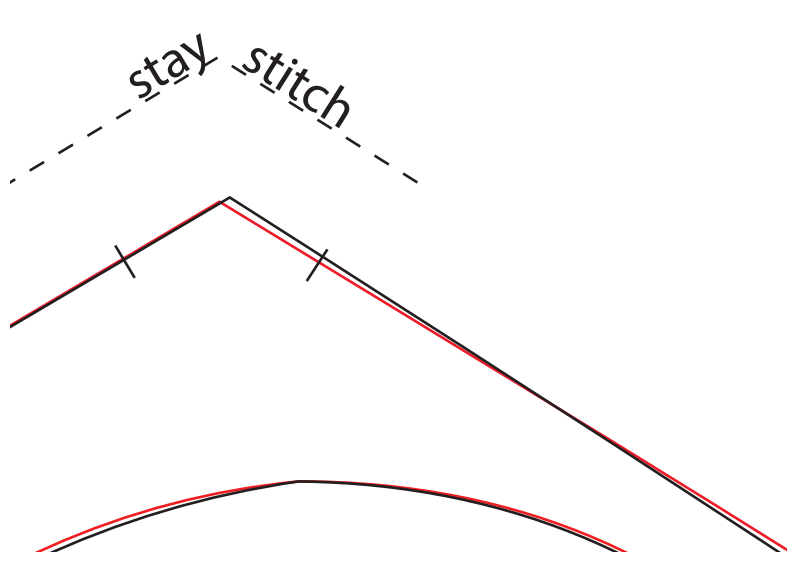
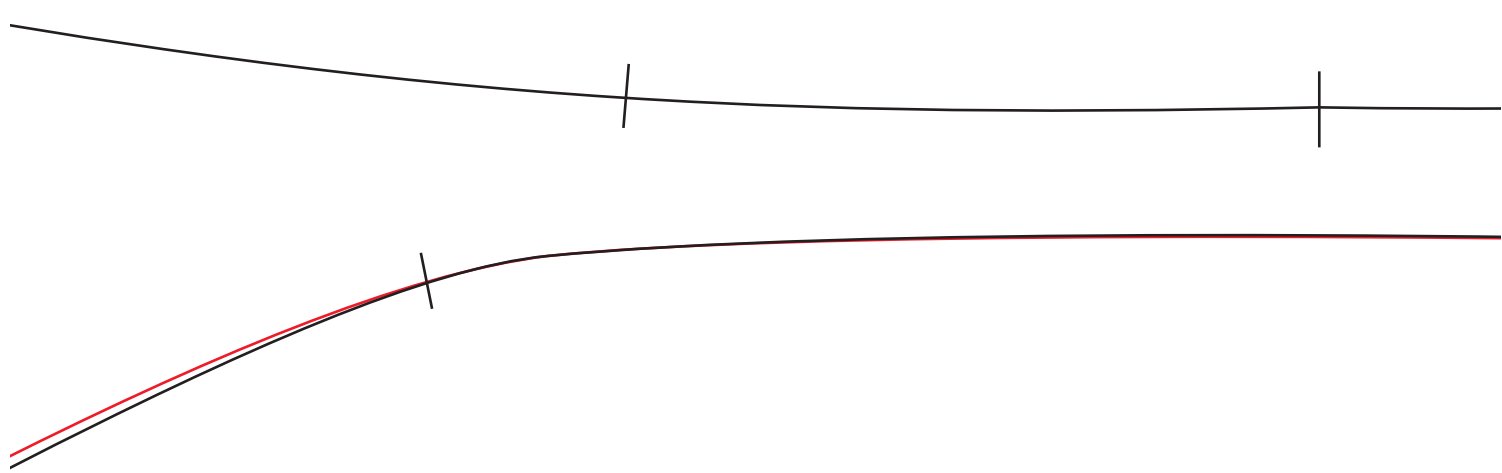
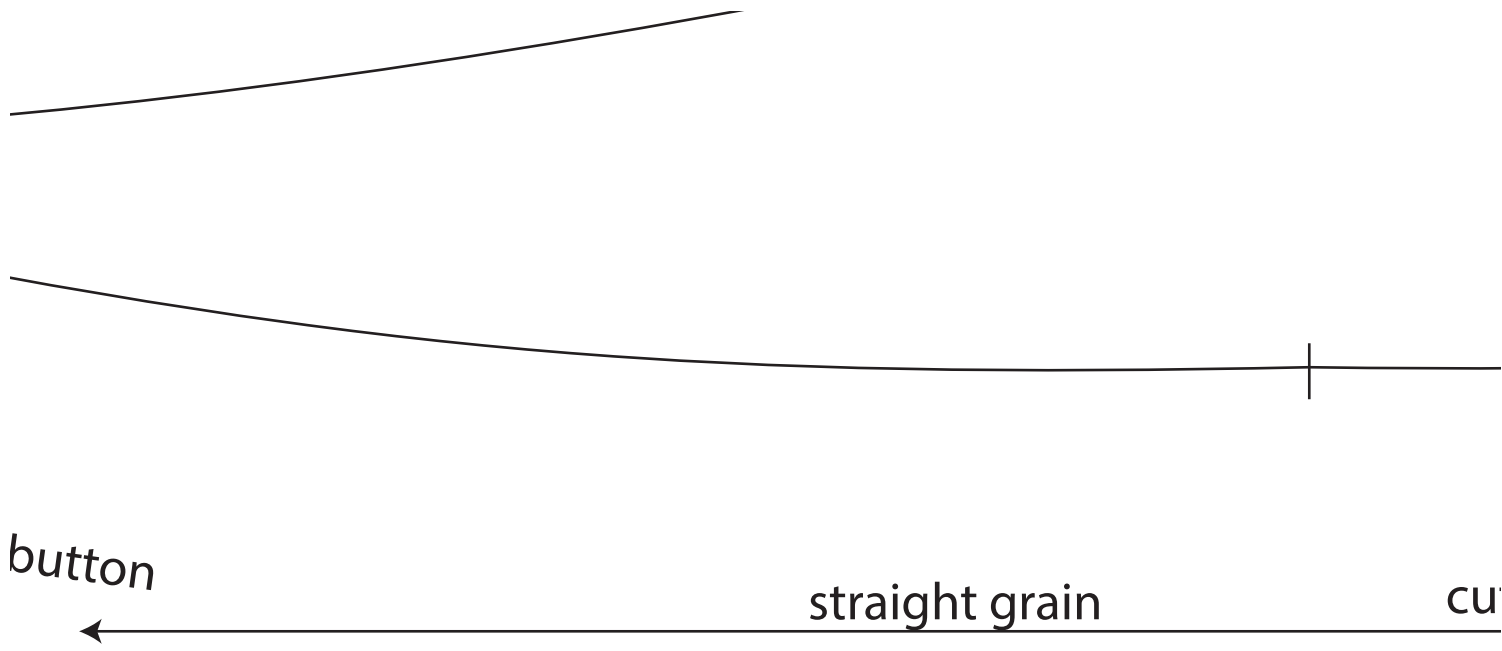


TAB FC

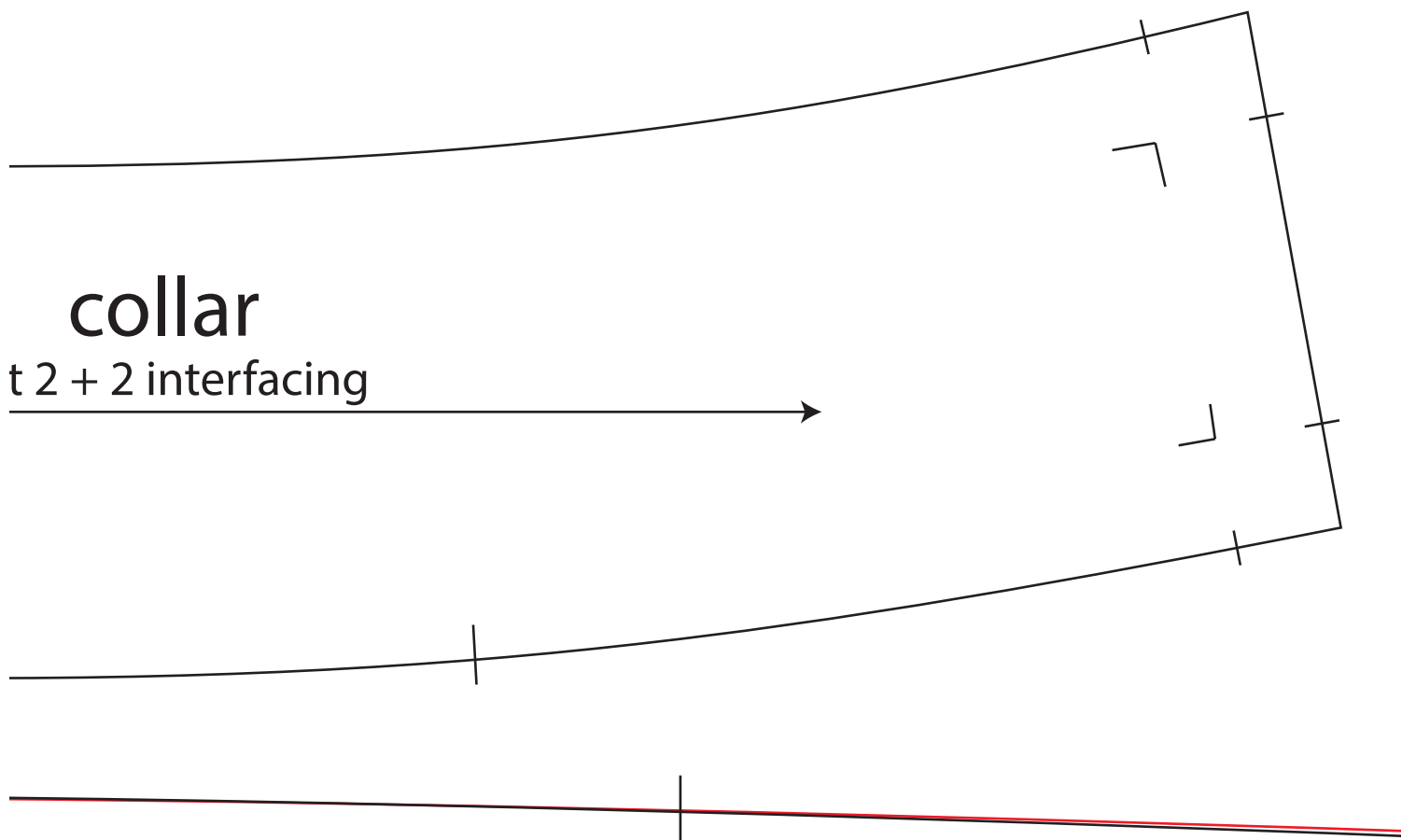


OLDING DIAGRAM





back sleeve
size 12
cut 1 pair
+
cut 1 pair lining

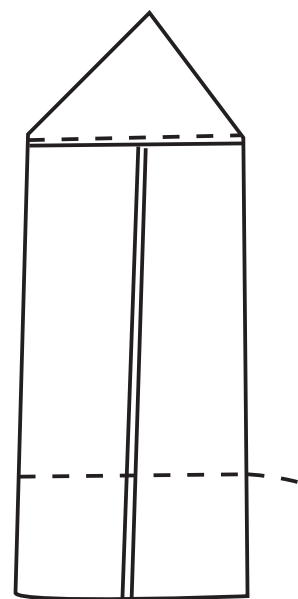


collar

t 2 + 2 interfacing

straight grain

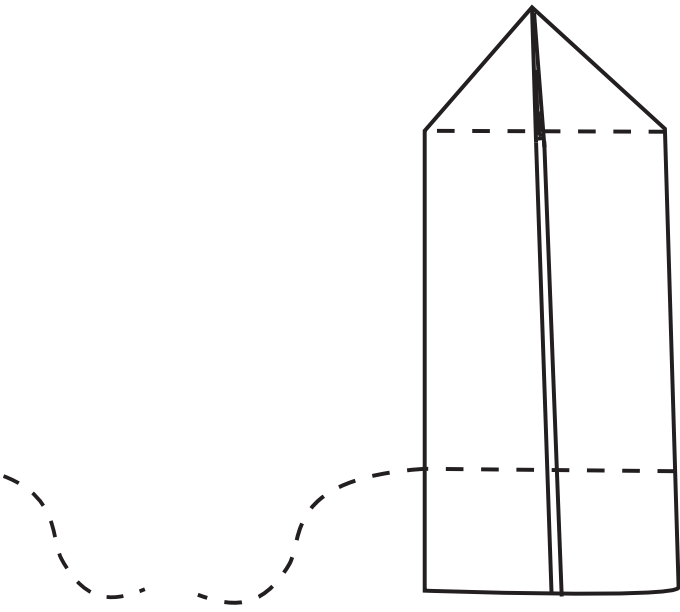
front of tab



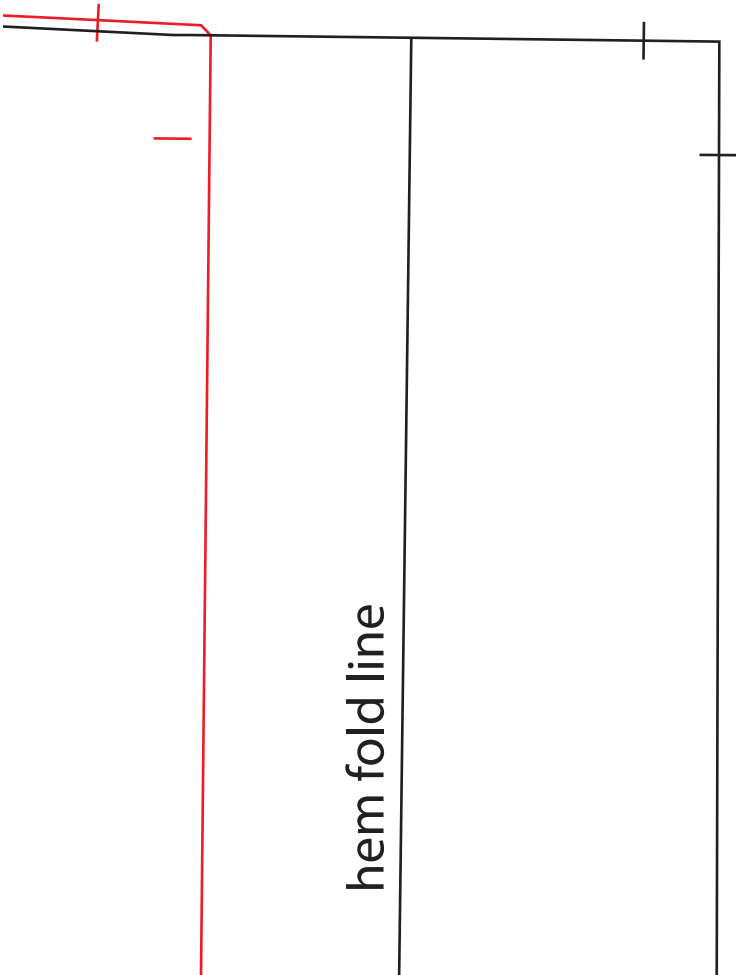
* button

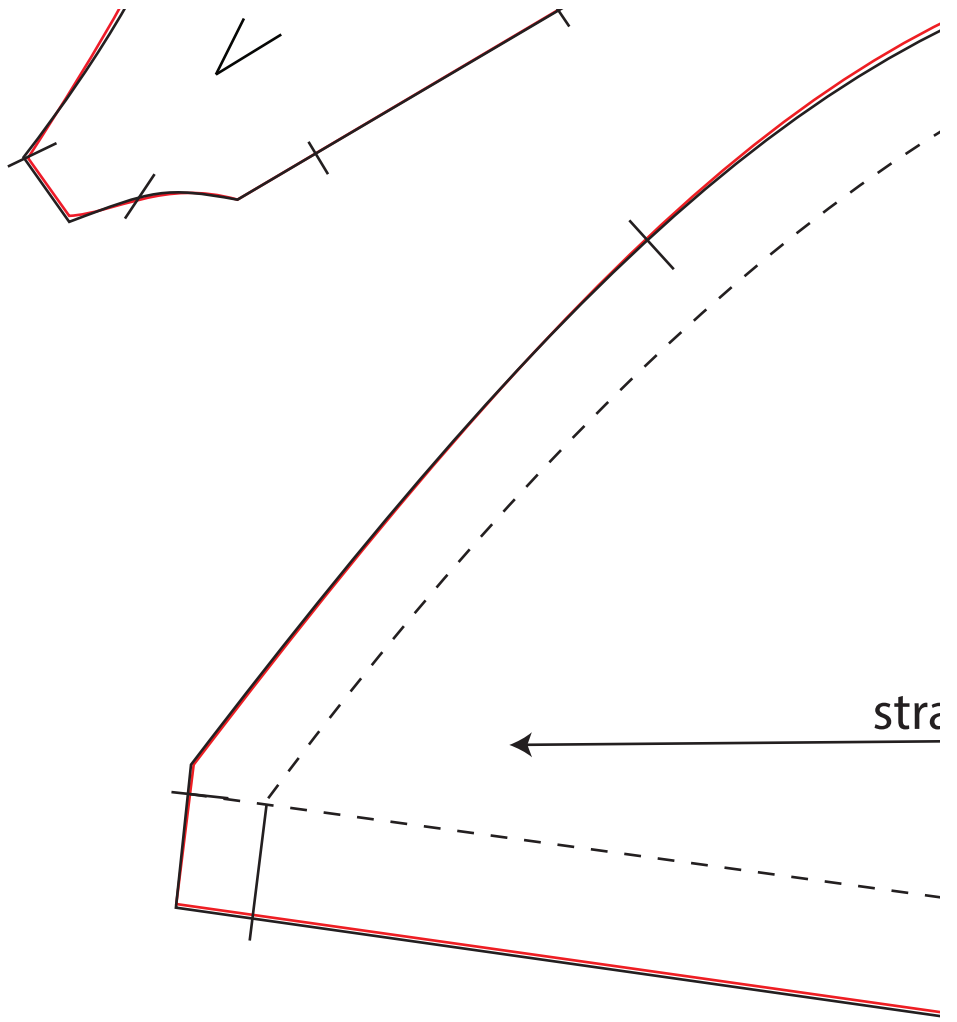


back of tab



hem fold line





pocket bag

cut 1 pair

+

cut 1 pair lining

right grain

