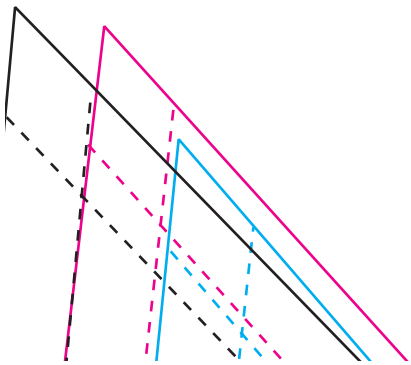
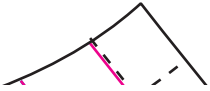


mal

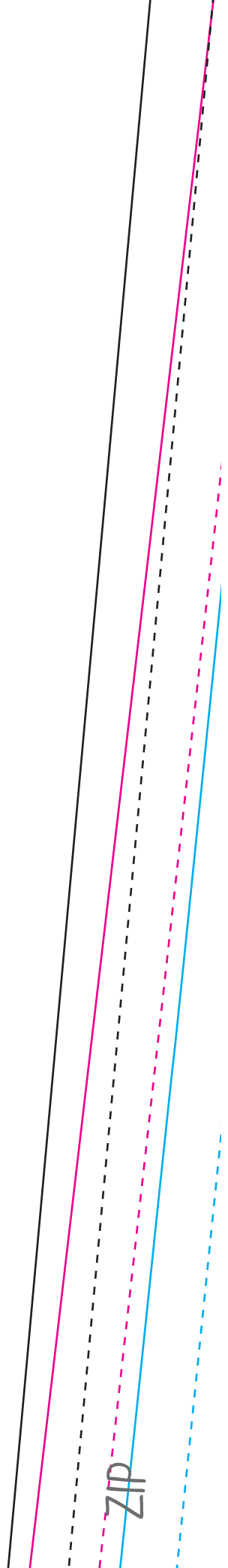




g







zip



The image shows a hand-drawn pattern for the left front of a jacket. It features several lines representing different sizes: a solid black line for the largest size, a solid blue line for the medium size, and a solid pink line for the smallest size. Dashed lines in corresponding colors (black, blue, pink) represent the pattern pieces for each size. The pattern is shaped like a trapezoid with a curved top edge. A vertical arrow on the right side is labeled 'GRAIN', indicating the direction of the fabric's grain. The text 'JACKET LEFT FRONT CUT 1' is centered on the pattern. Below this, the bust measurements for each size are listed: 'LARGE 16-18 42" BUST', 'MEDIUM 12-14 38" BUST', and 'SMALL 8-10 34" BUST'. The lines are color-coded to match the size labels: black for large, blue for medium, and pink for small.

JACKET  
LEFT FRONT

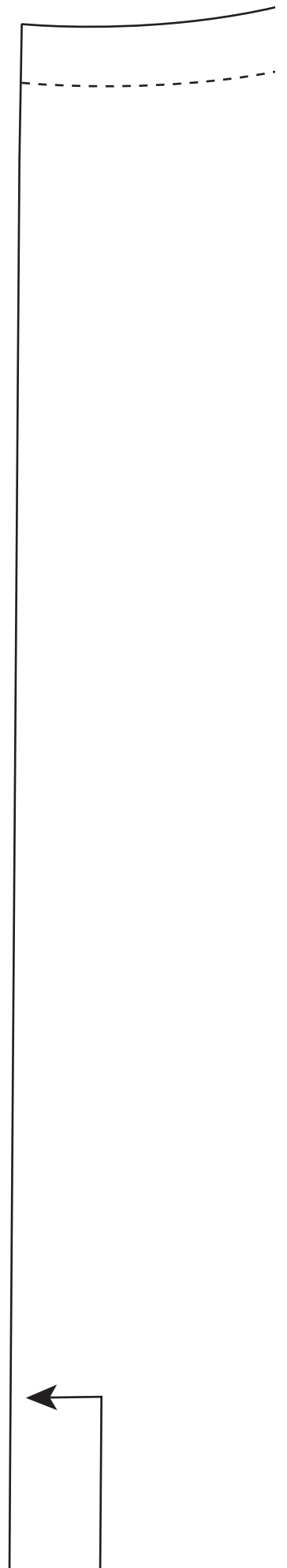
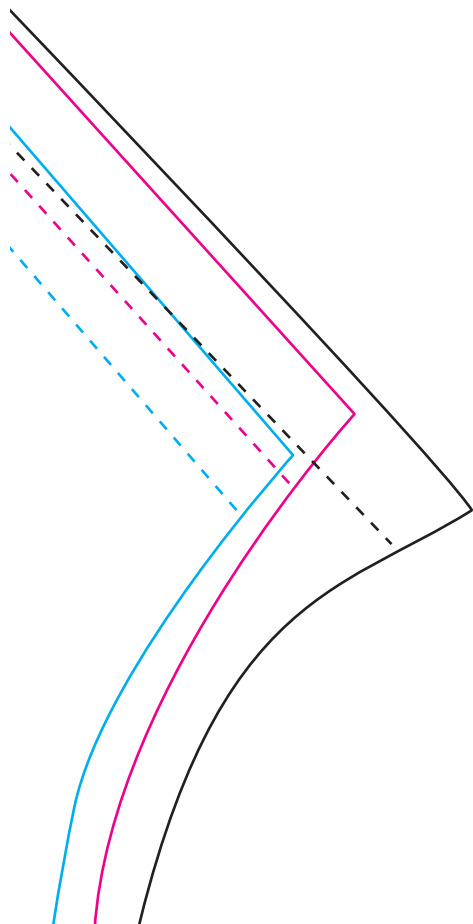
CUT 1

LARGE 16-18 42" BUST

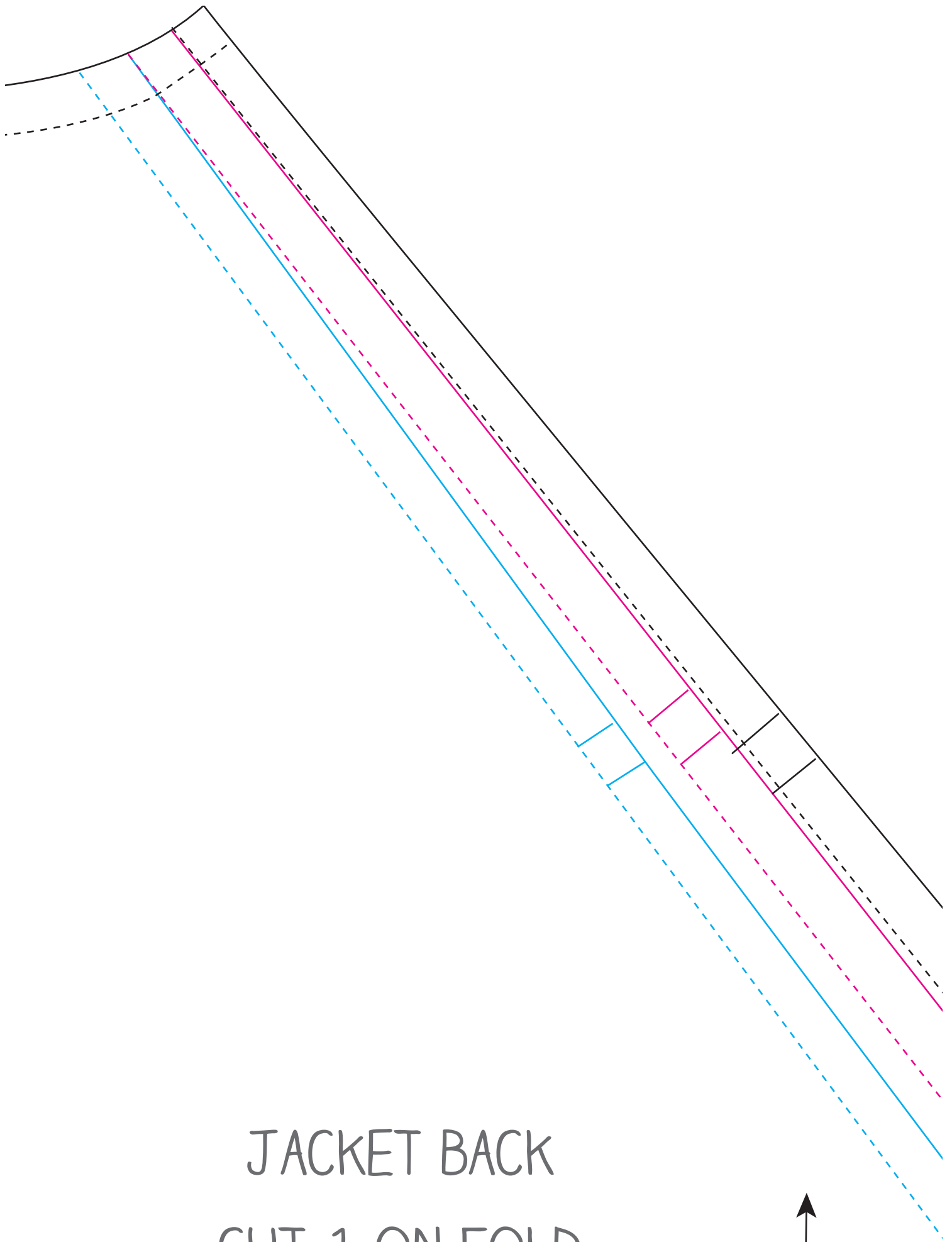
MEDIUM 12-14 38" BUST

SMALL 8-10 34" BUST

GRAIN

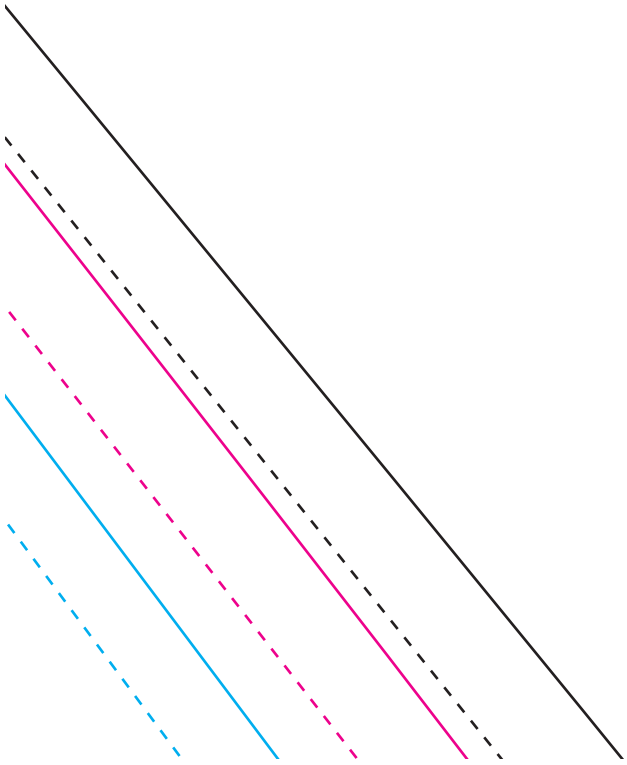


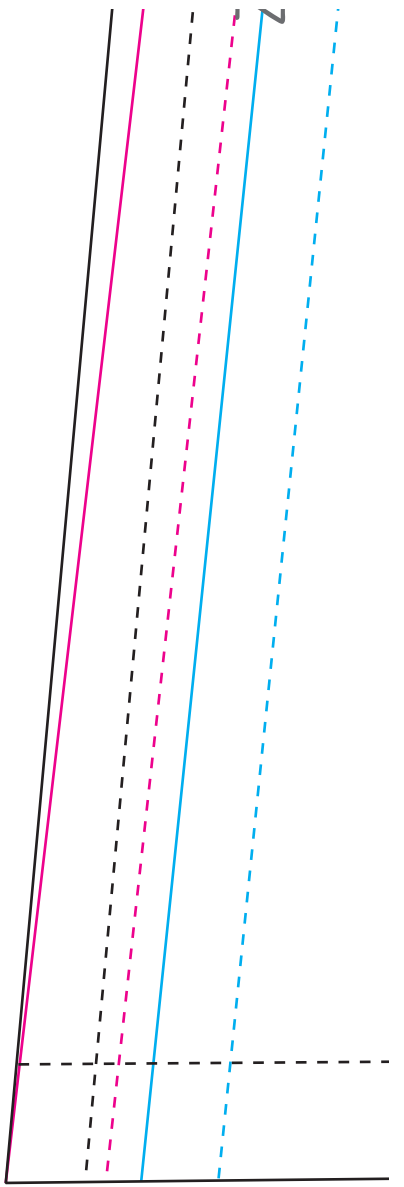


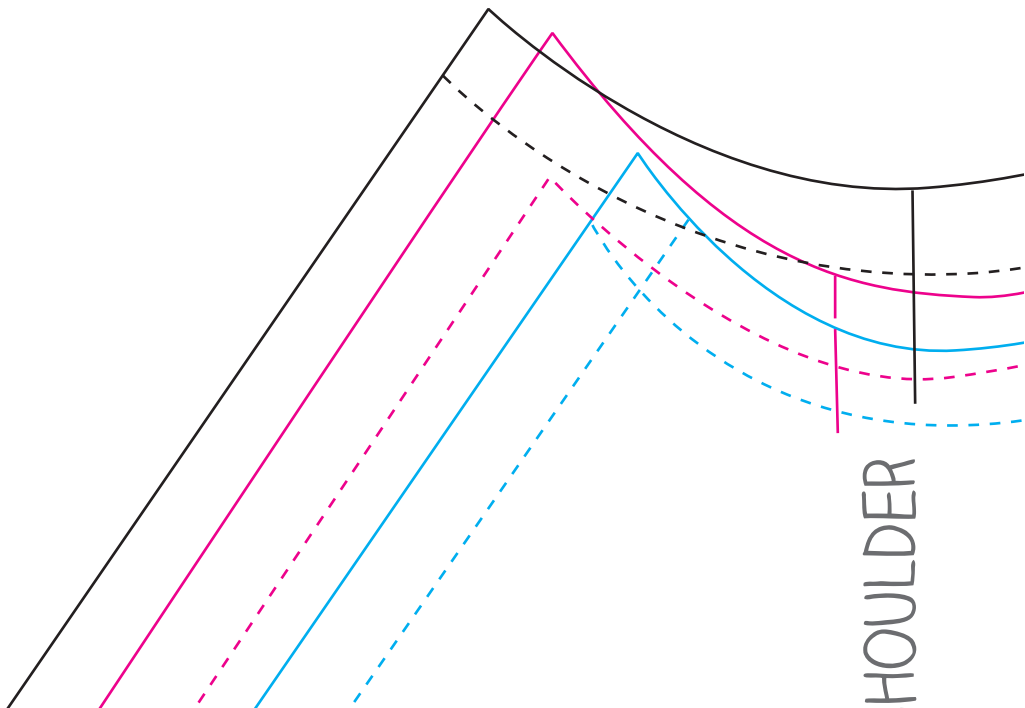
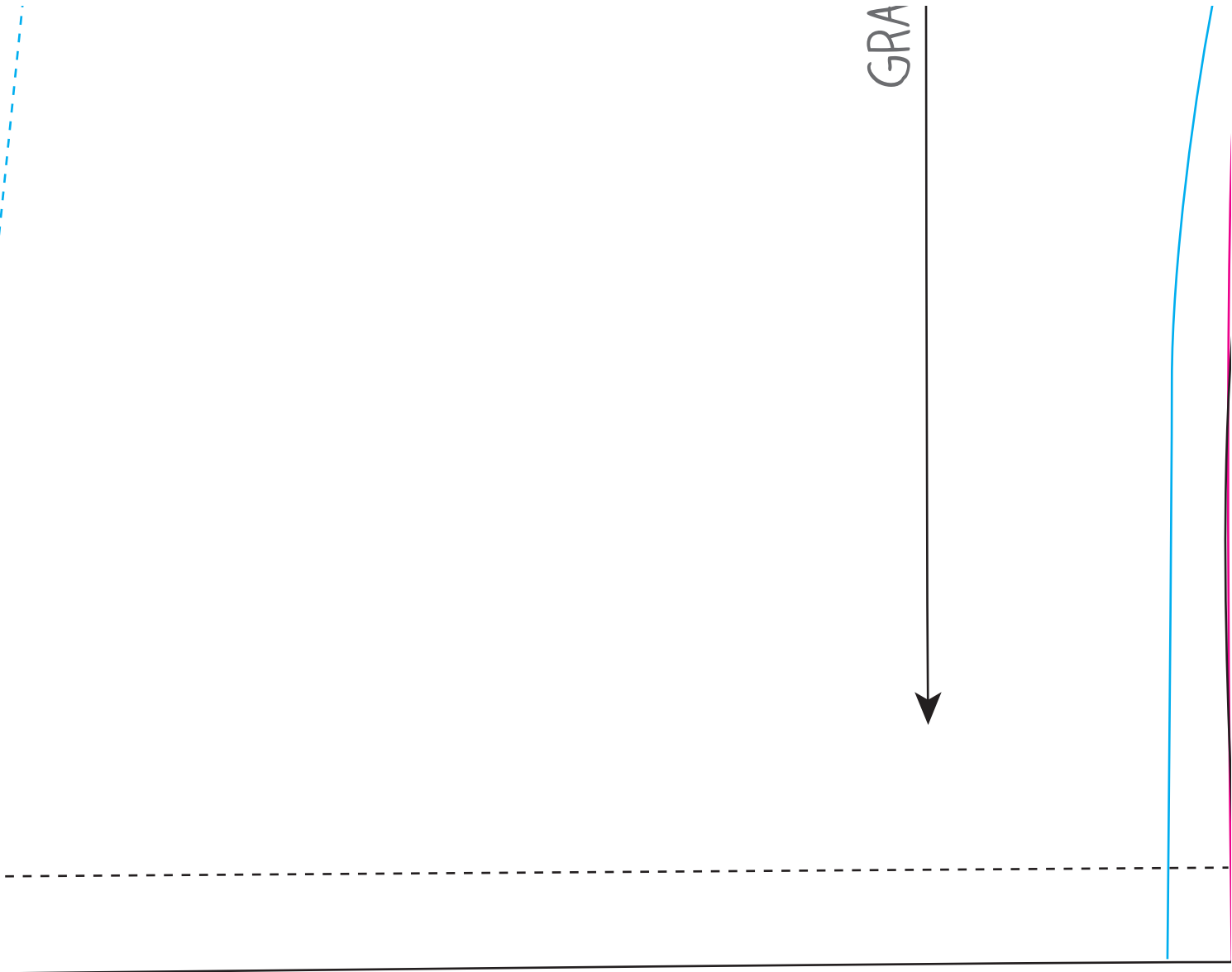


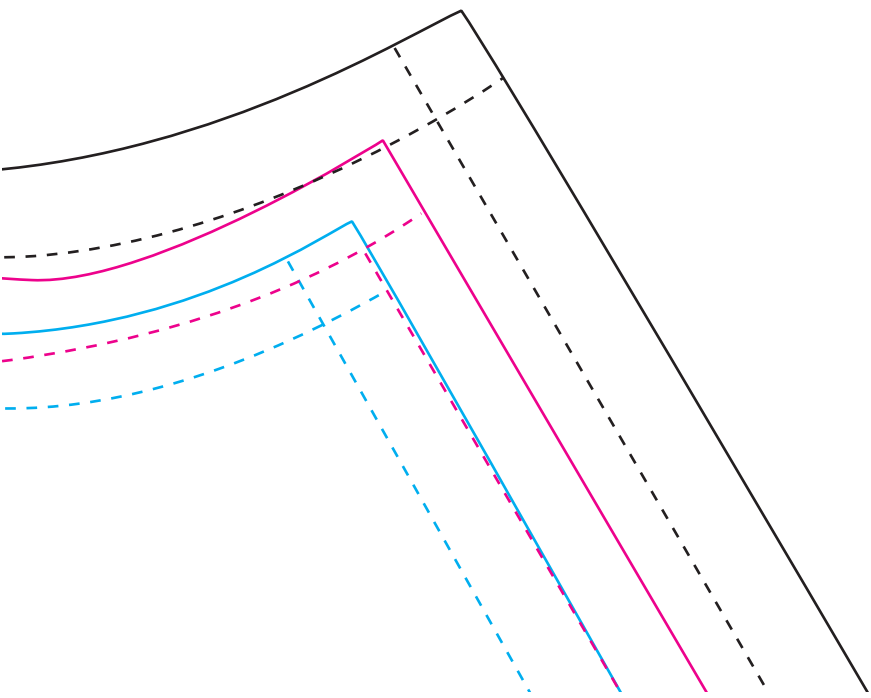
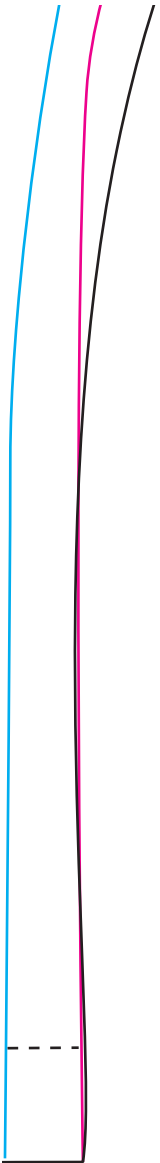
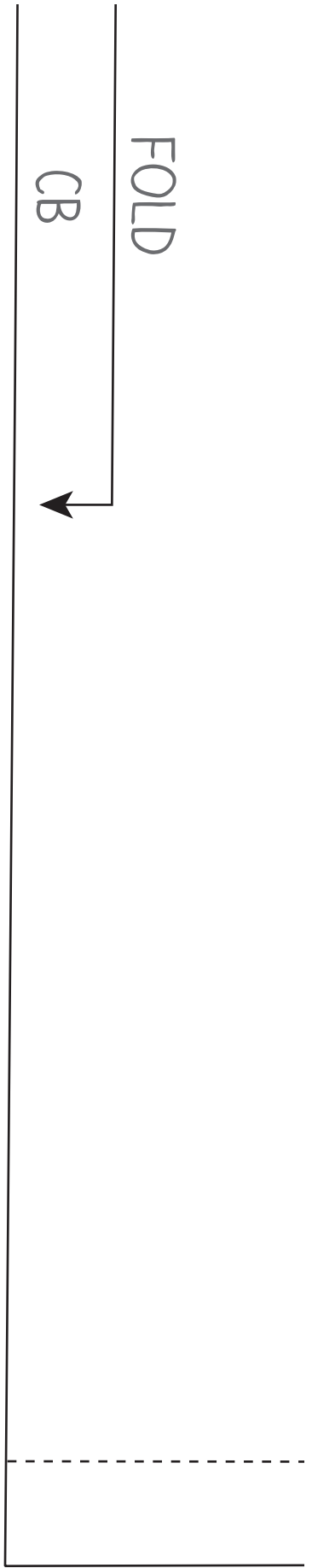
JACKET BACK  
CUT 1 ON FOLD

.....







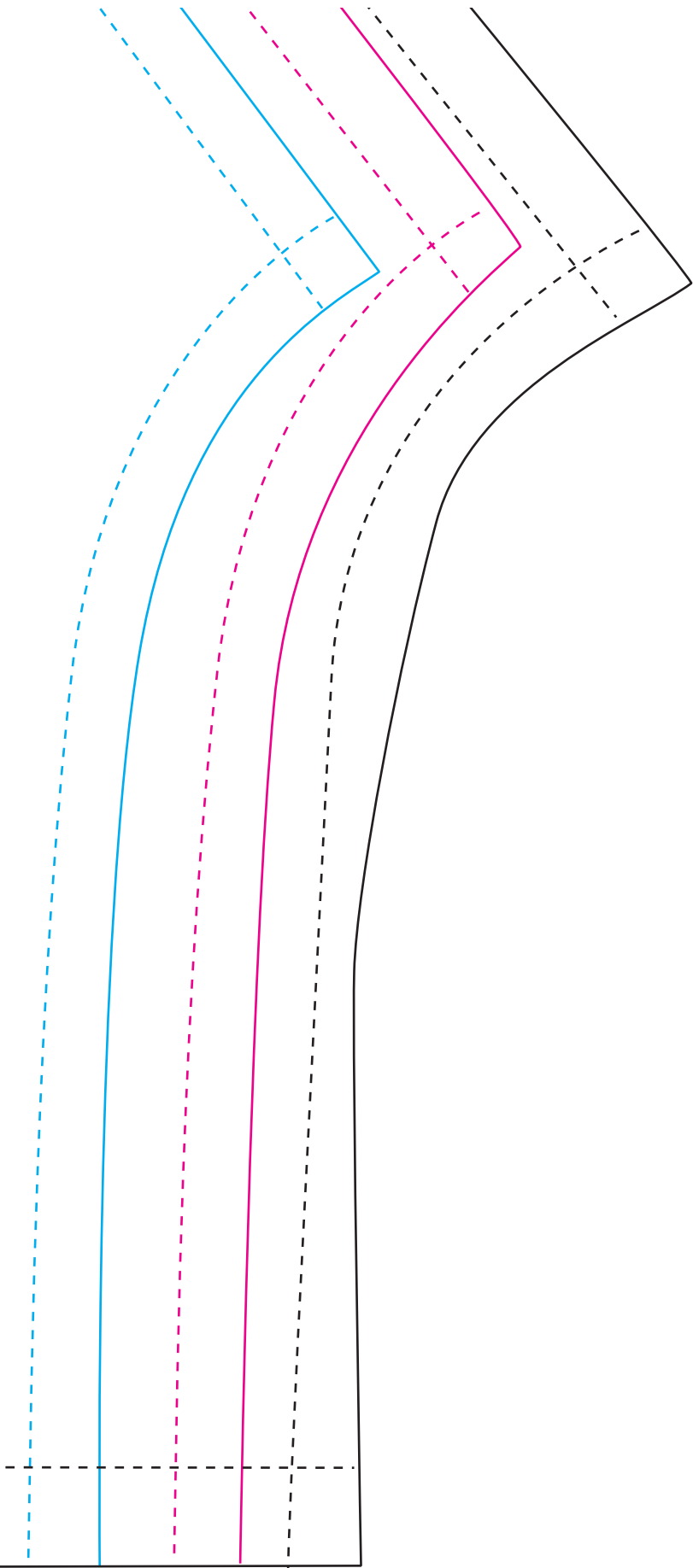


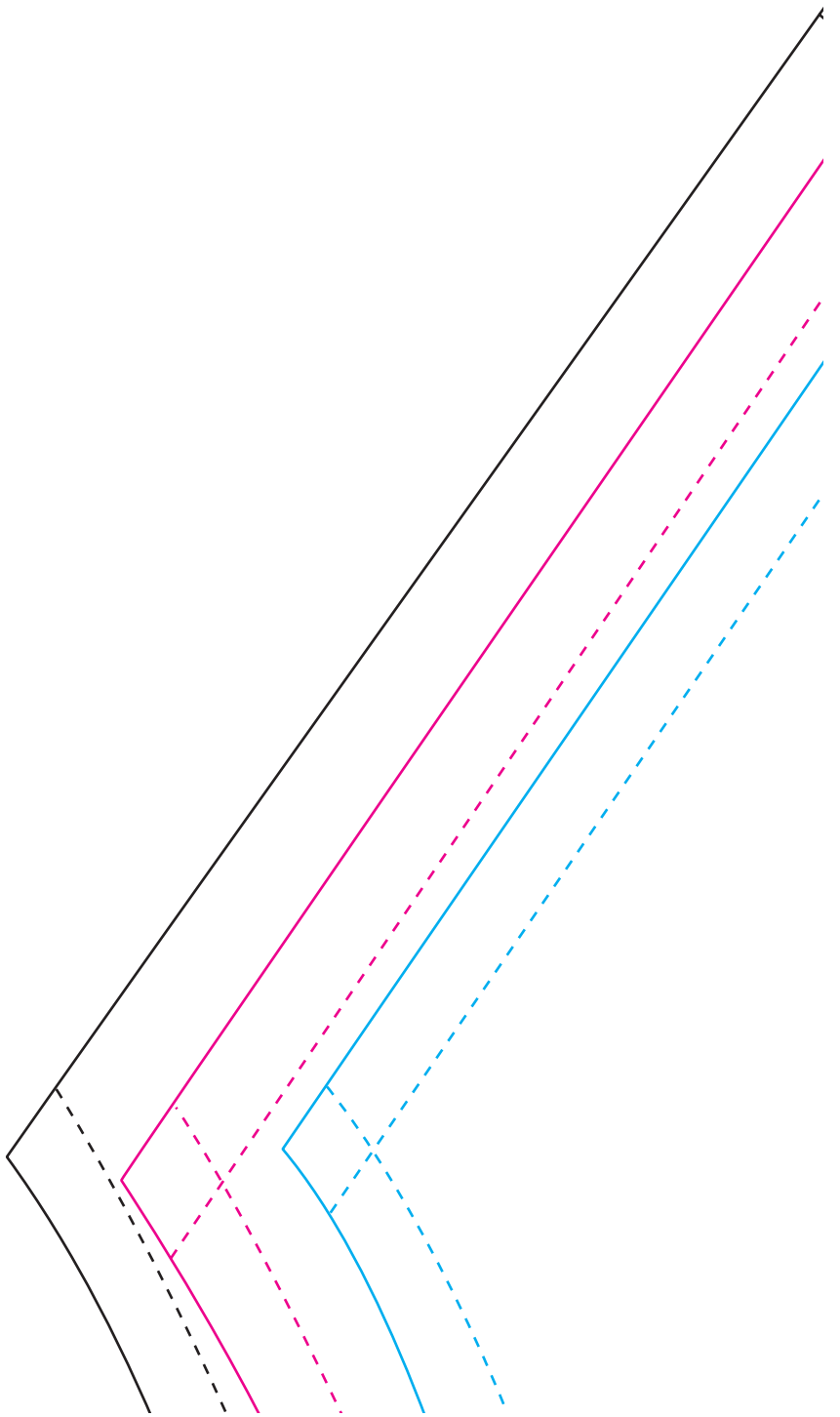
-----

LARGE 16 -18 42" BUST  
MEDIUM 12 -14 38" BUST  
SMALL 8 -10 34" BUST

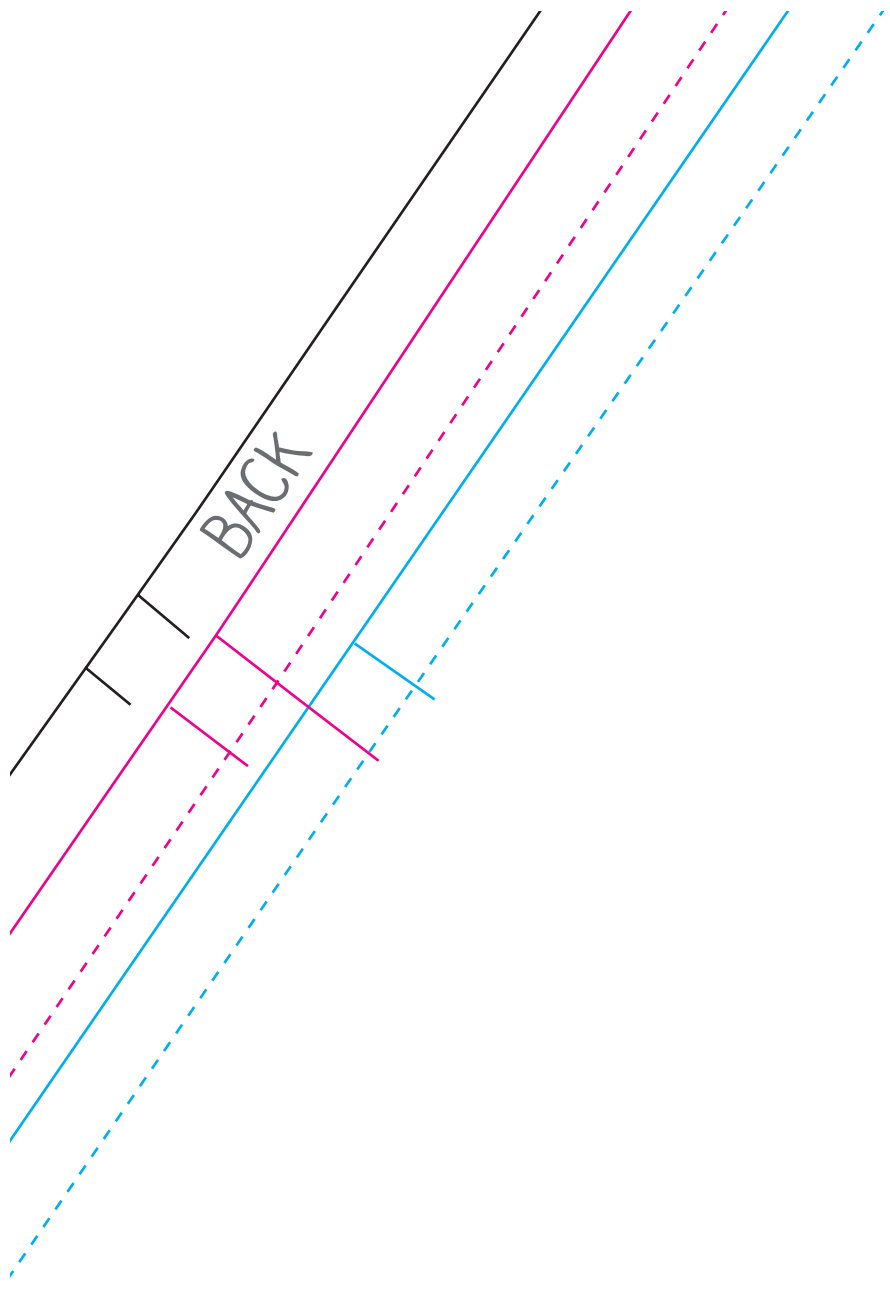
GRAIN







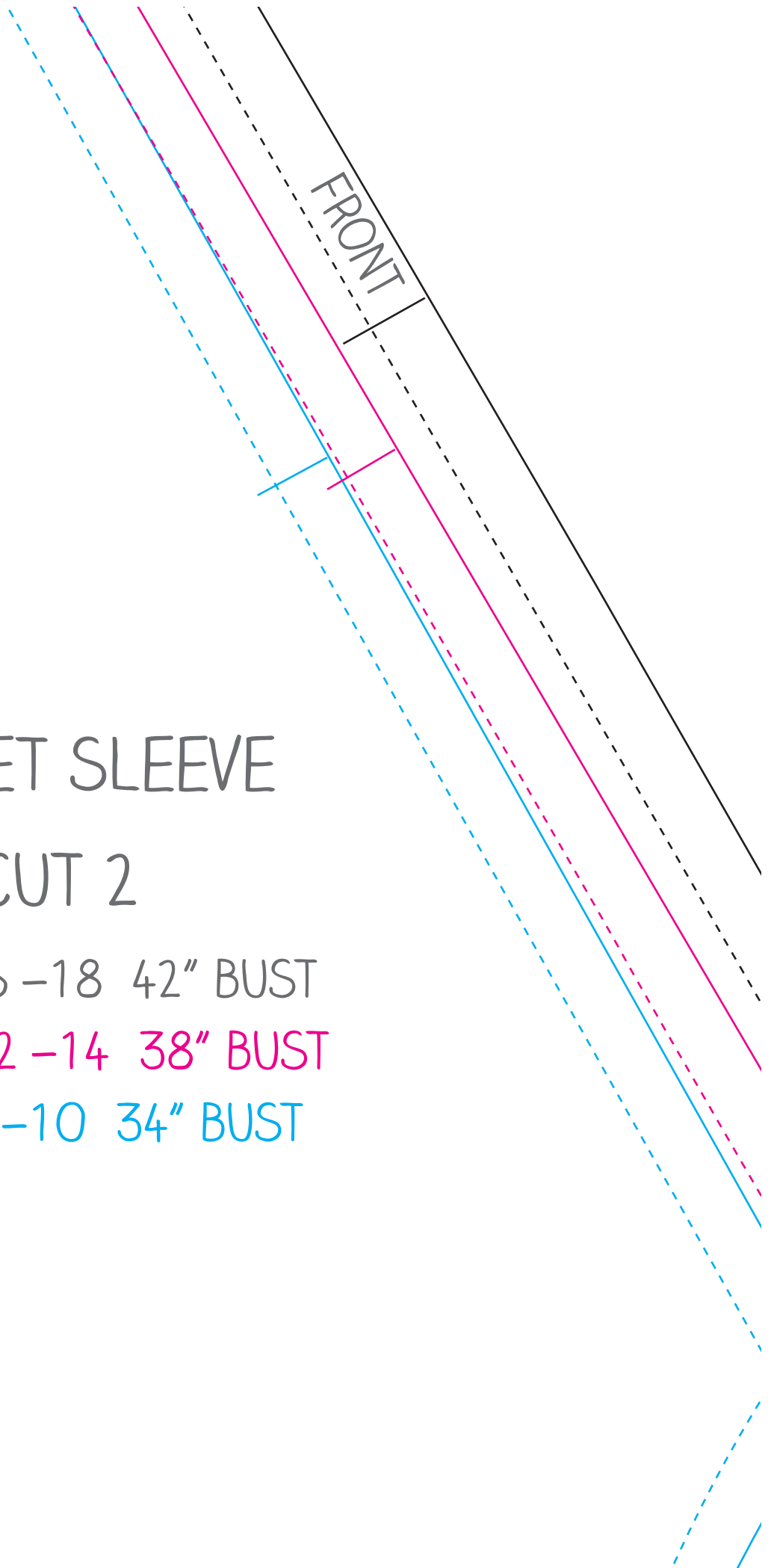




BACK

GRAIN

SHO



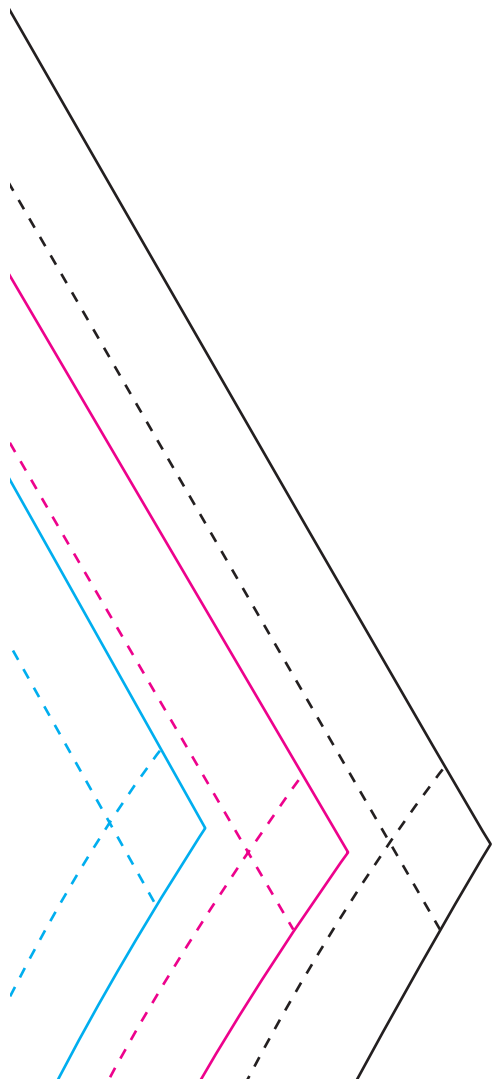
# JACKET SLEEVE

## CUT 2

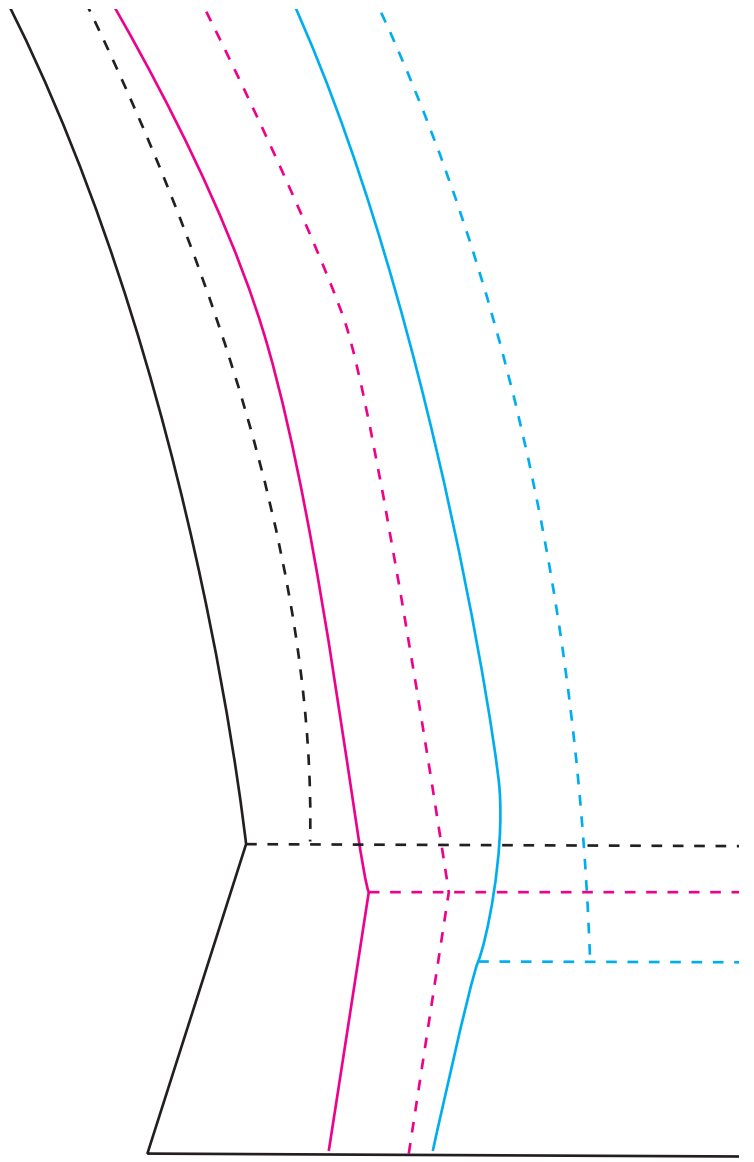
LARGE 16-18 42" BUST

MEDIUM 12-14 38" BUST

SMALL 8-10 34" BUST









FC



FAC



FOLD



FACING

