

JACKET  
FRONT FACING

SIDE  
SEAM

RIGHT  
CUT 1 FABR

CB

BACK FACING  
CUT 1 FABRIC & 1 INTE

LEFT FRONT FACING  
CUT 1 FABRIC & 1 INTERFACIN



FRONT FACING  
FABRIC & 1 INTERFACING

FRONT  
INTERFACING

FRONT  
FABRIC

SIDE  
SEAM

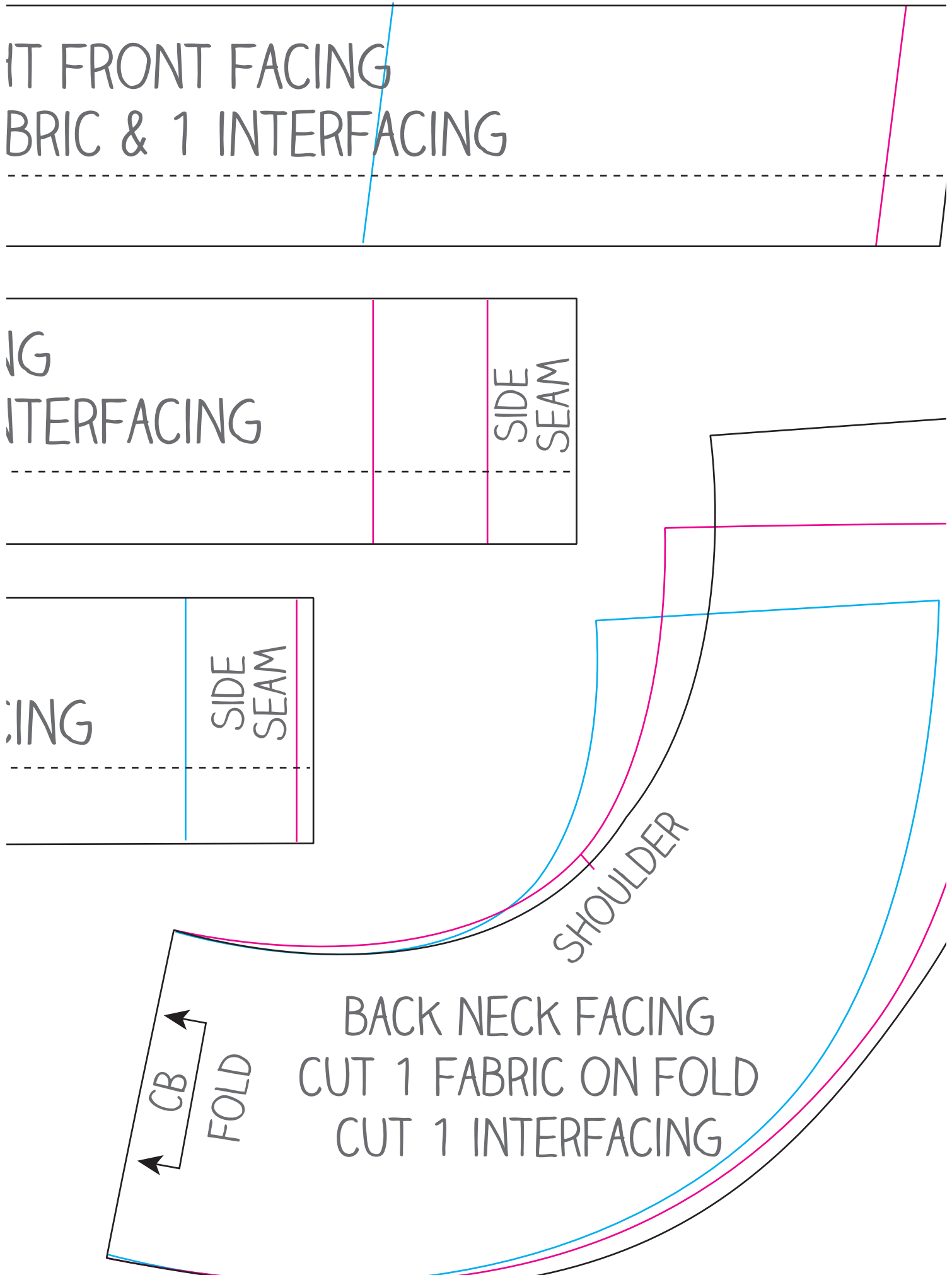
SIDE  
SEAM

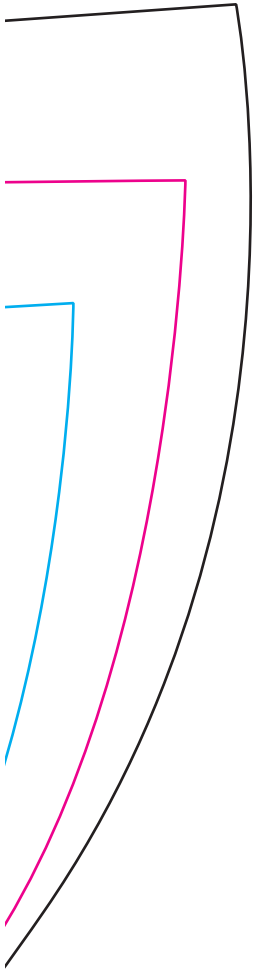
SHOULDER

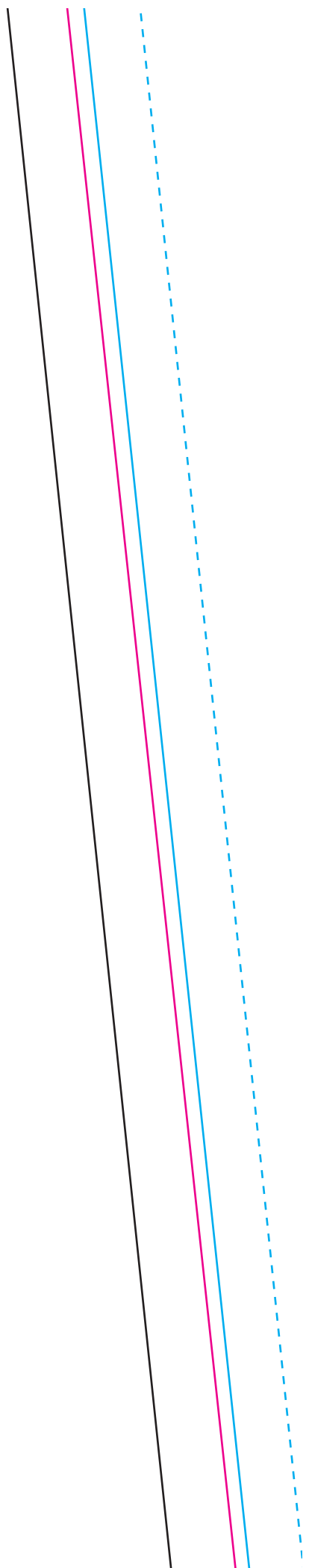
BACK NECK FACING  
CUT 1 FABRIC ON FOLD  
CUT 1 INTERFACING

CB

FOLD







# FRONT FACING

CUT 2 LEFT FRONT  
CUT 1 RIGHT FRONT  
CUT 2 INTERFACING

LARGE 16 -18 42" BUST

MEDIUM 12 -14 38" BUST

SMALL 8 -10 34" BUST

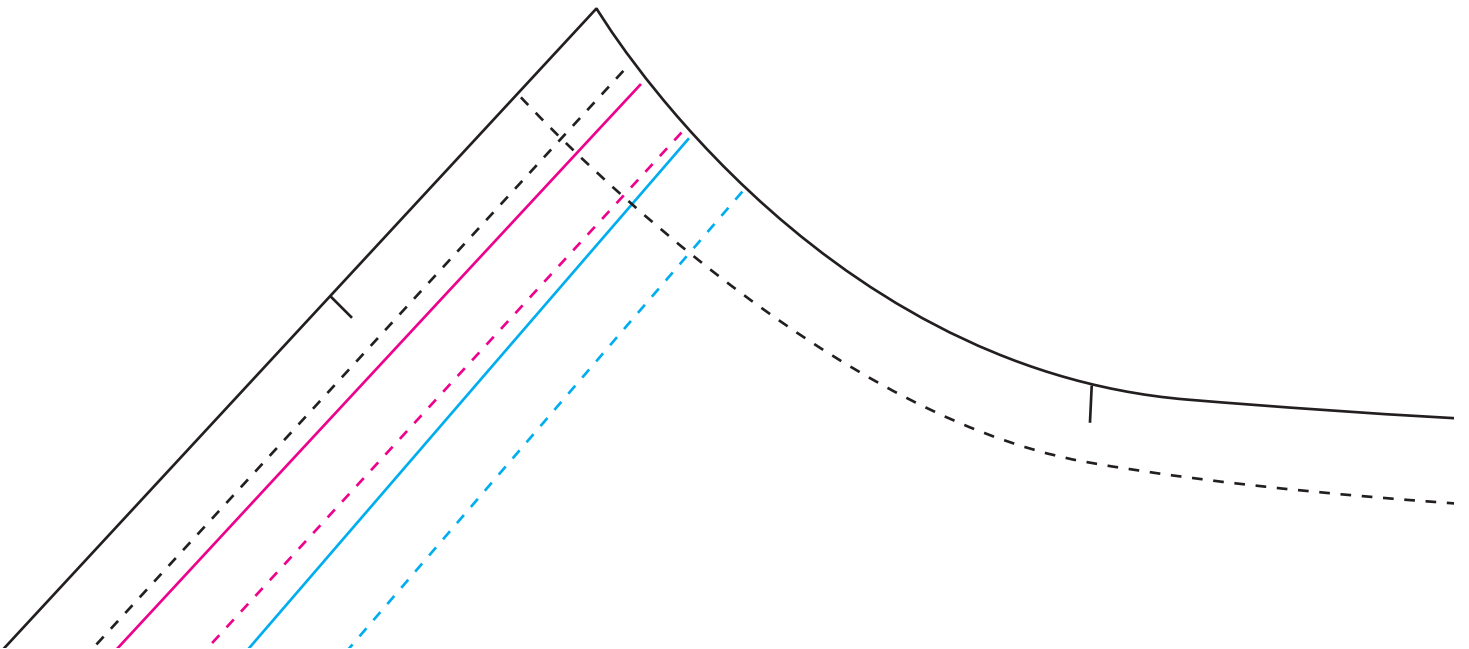
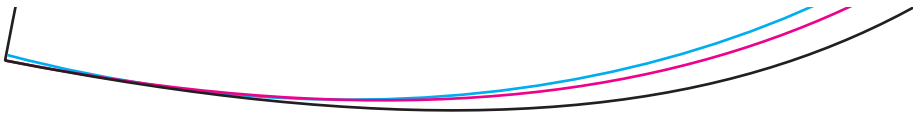


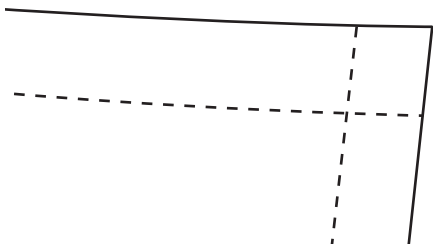
GRAIN

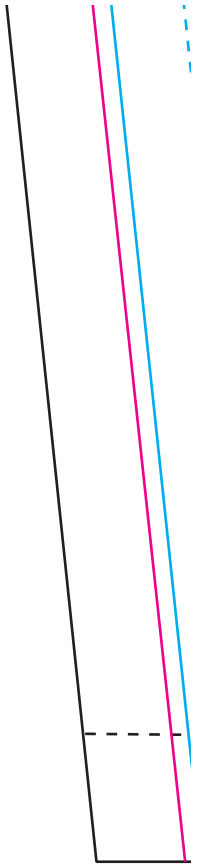
CF

ZIP

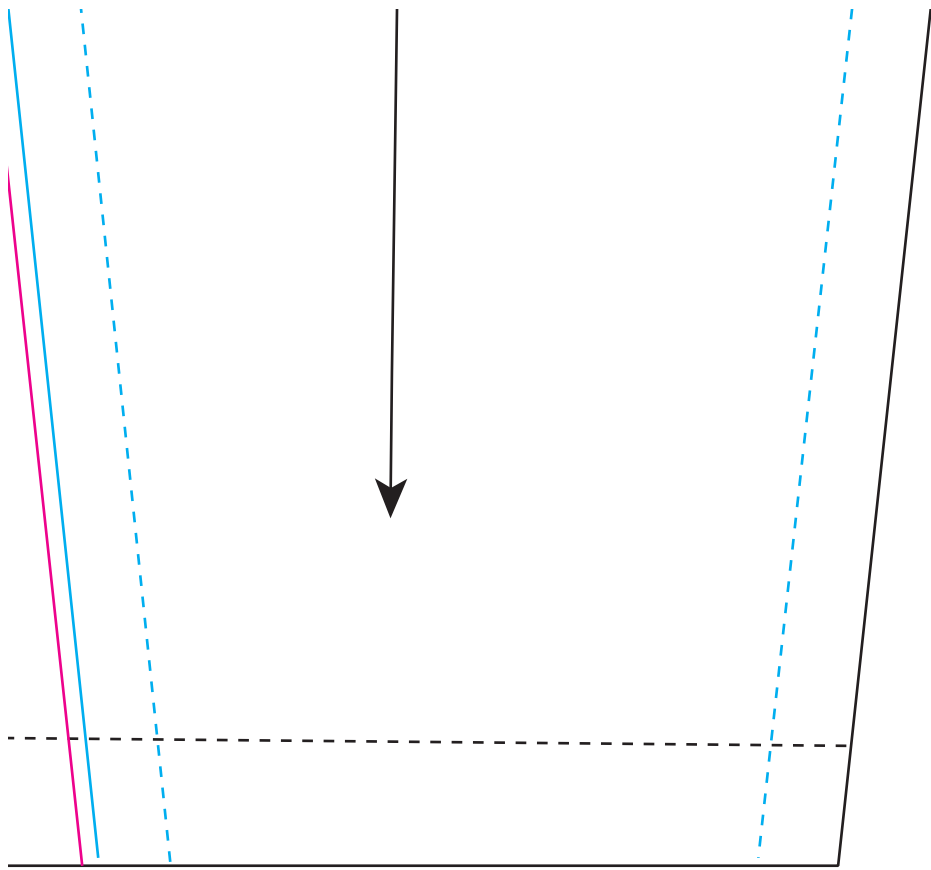


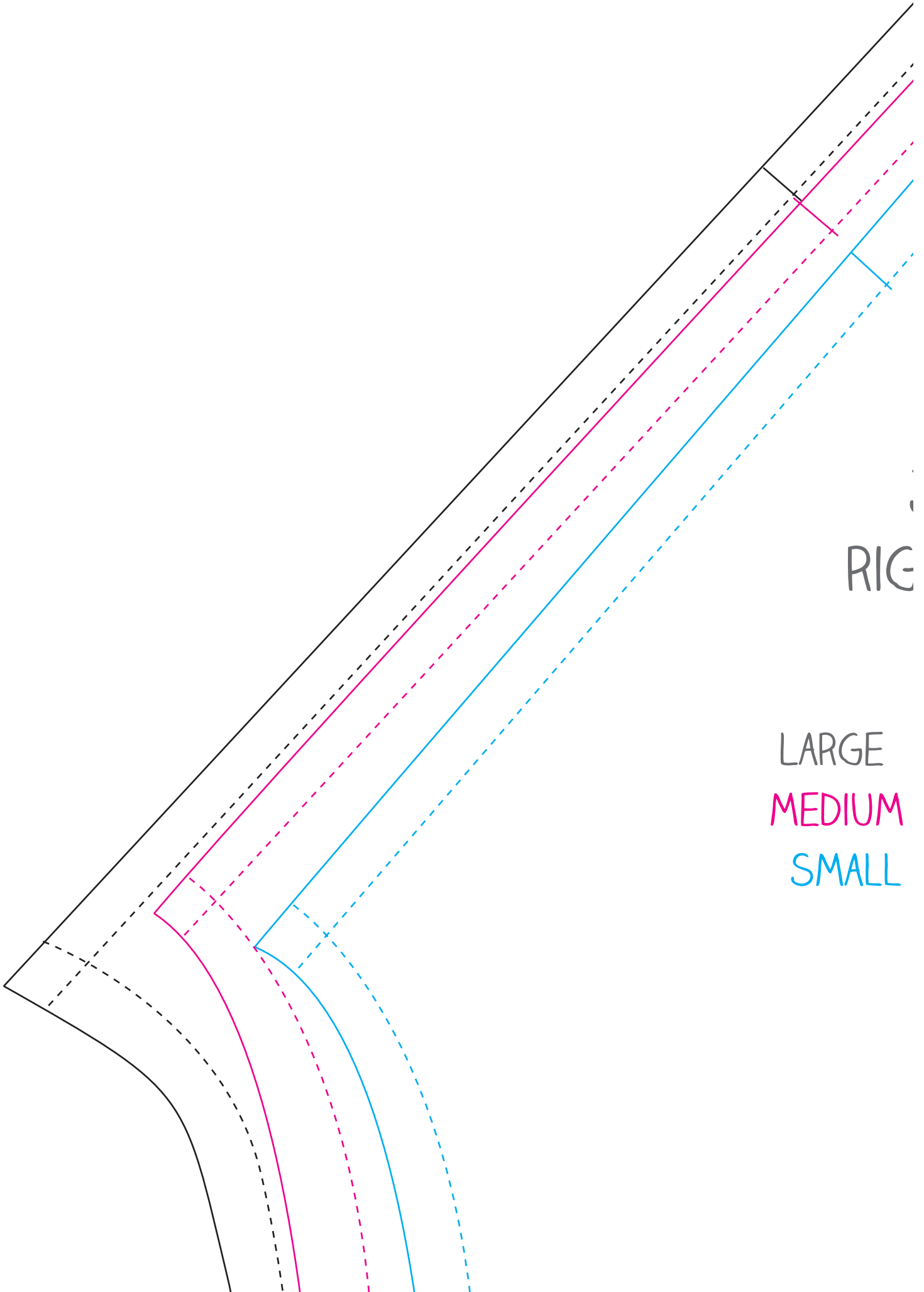






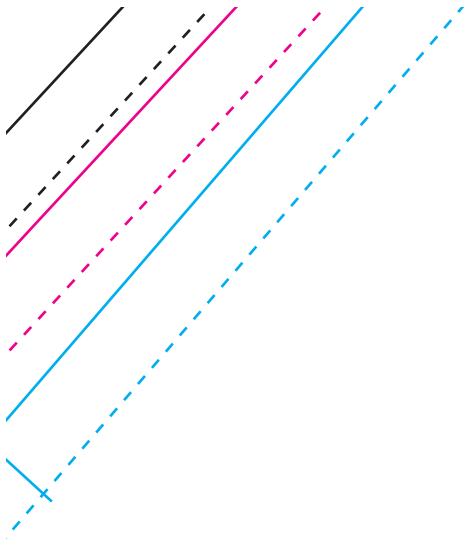






RIG

LARGE  
MEDIUM  
SMALL



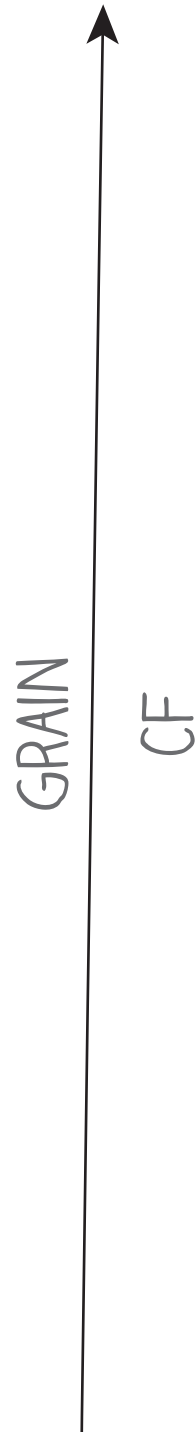
JACKET  
RIGHT FRONT

CUT 1

E 16-18 42" BUST

JM 12-14 38" BUST

LL 8-10 34" BUST



ZIP

