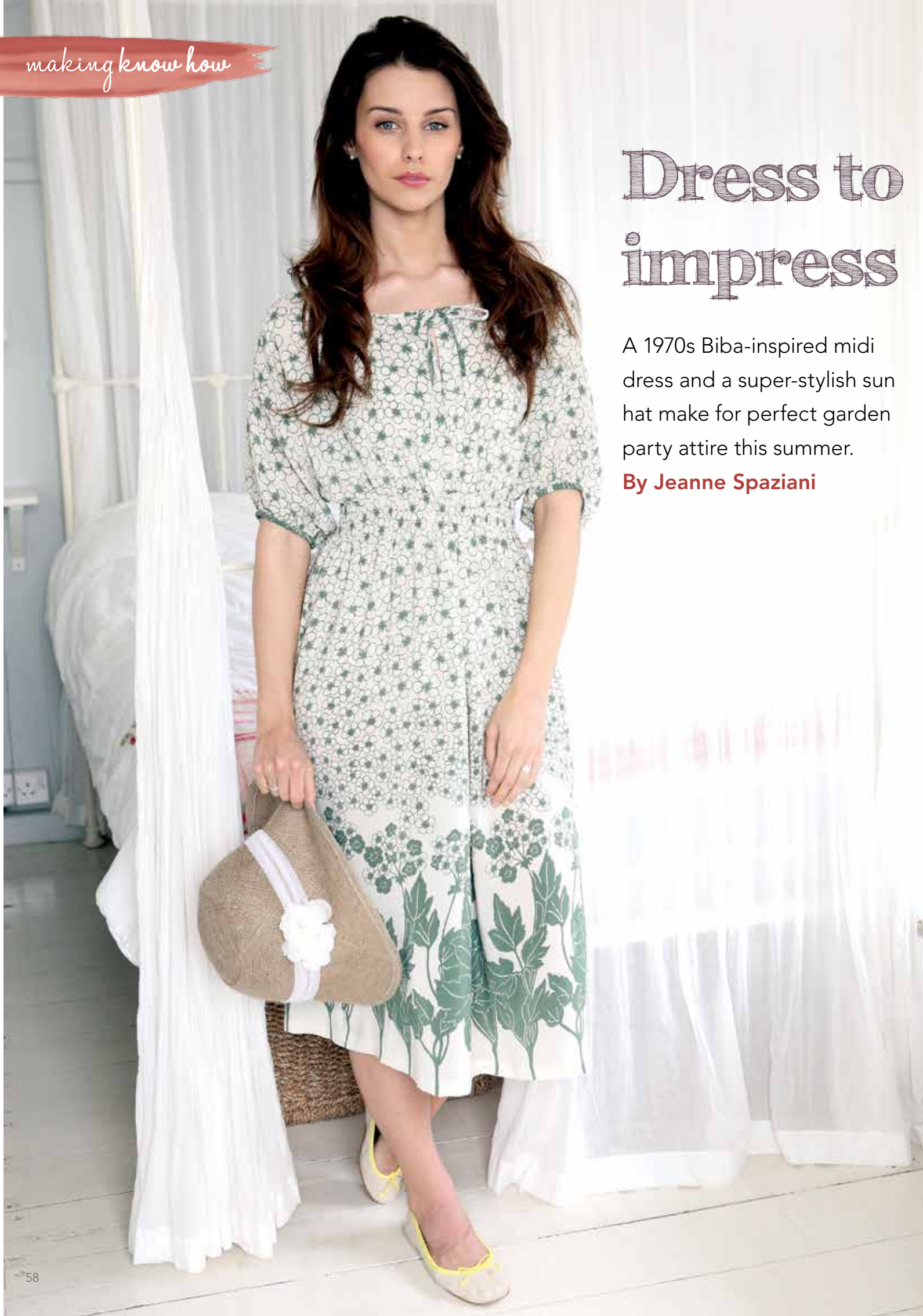


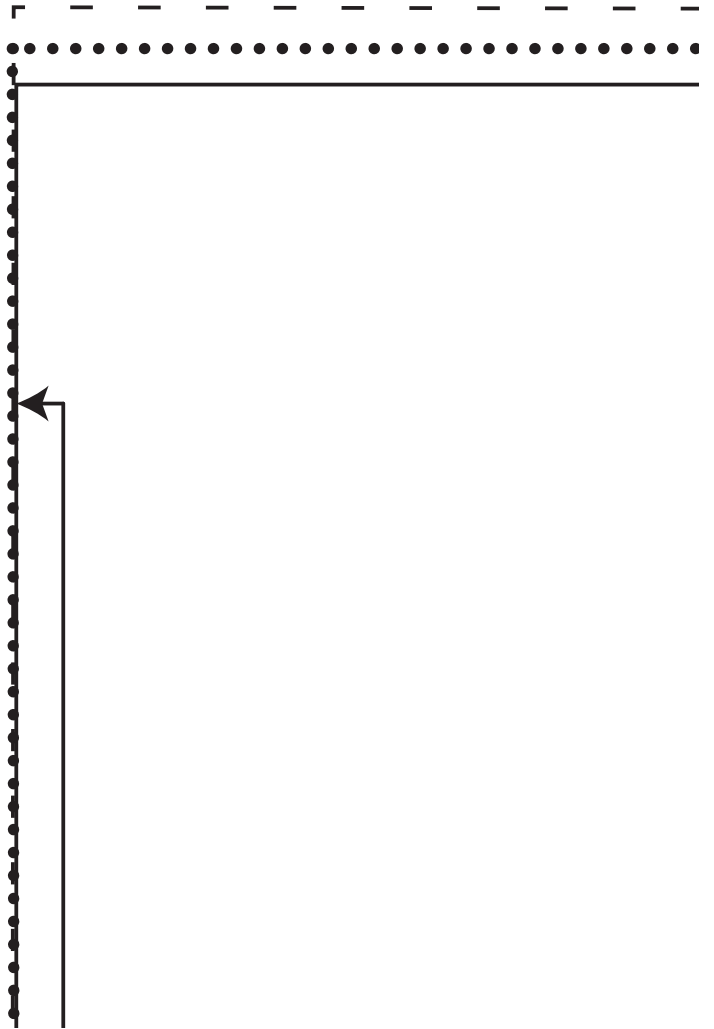
*making know how*

# Dress to impress

A 1970s Biba-inspired midi dress and a super-stylish sun hat make for perfect garden party attire this summer.

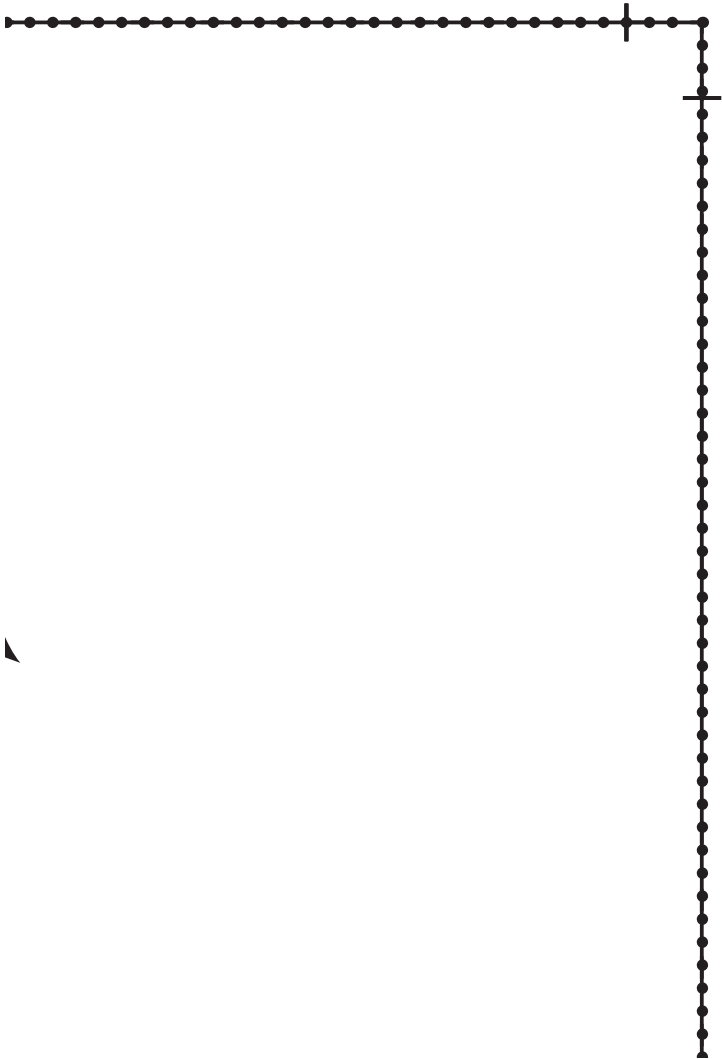
**By Jeanne Spaziani**

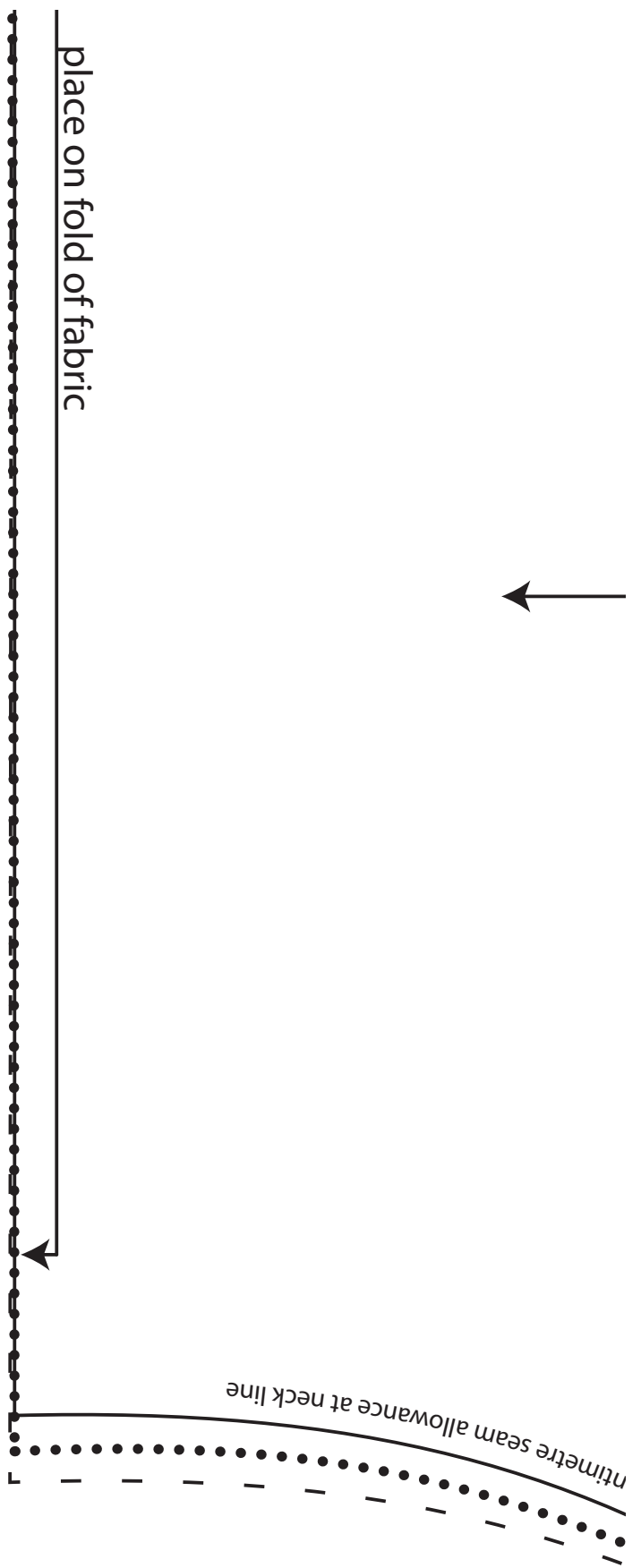




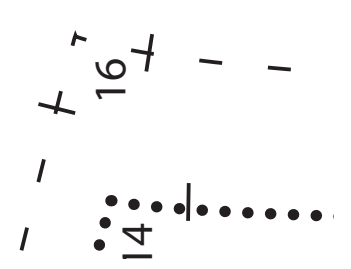






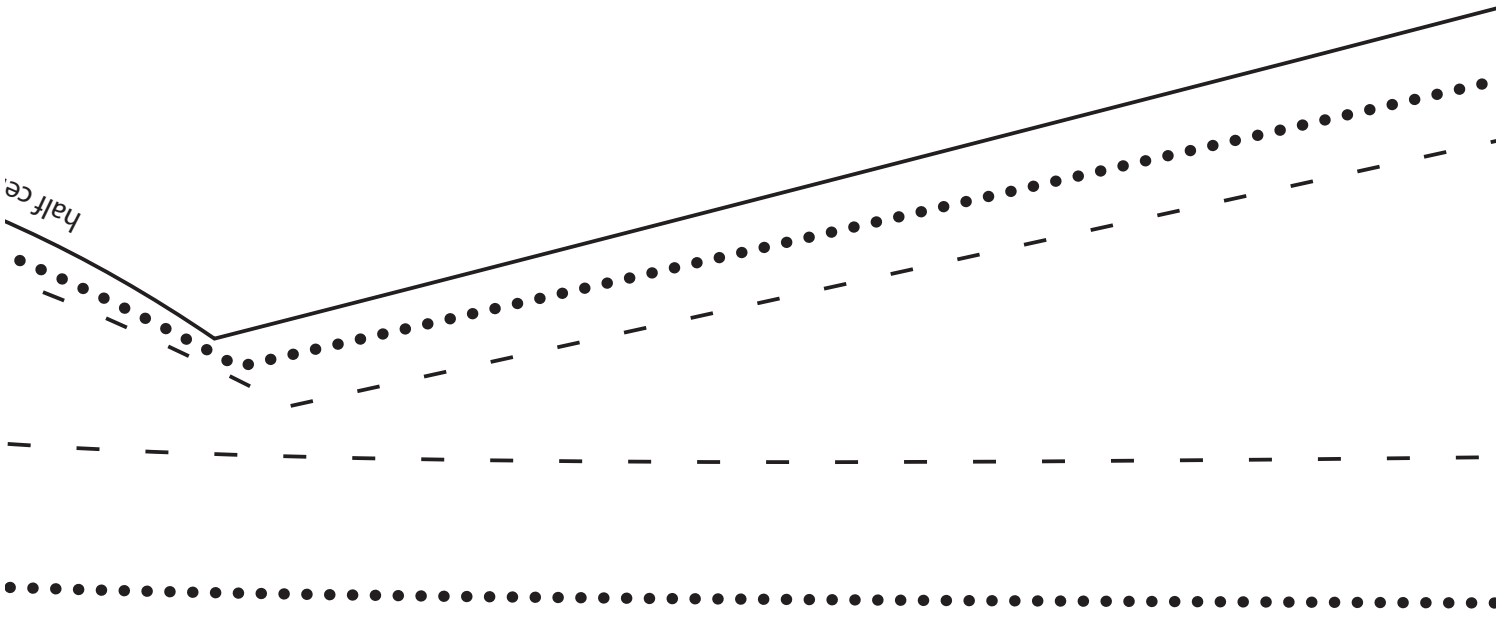


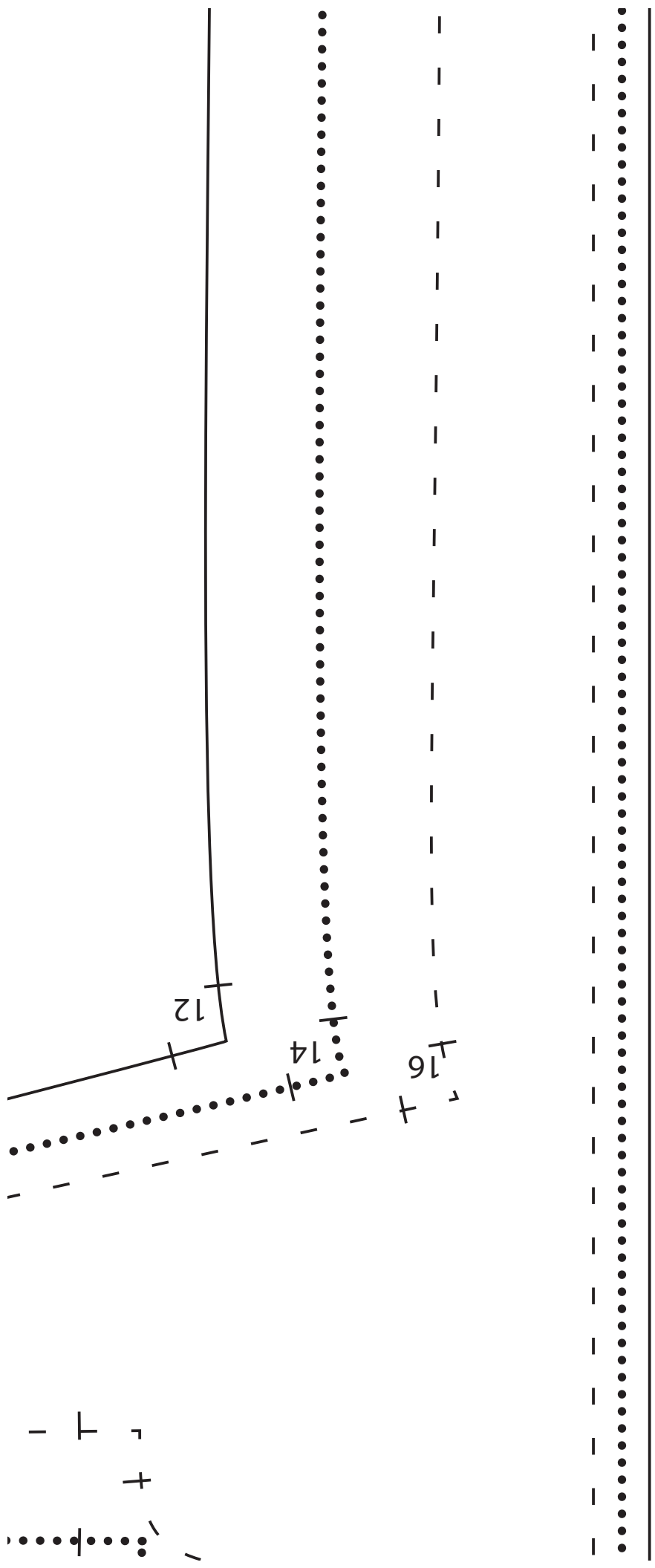
place on fold of fabric



back bodice  
cut 1 on fold

straight grain

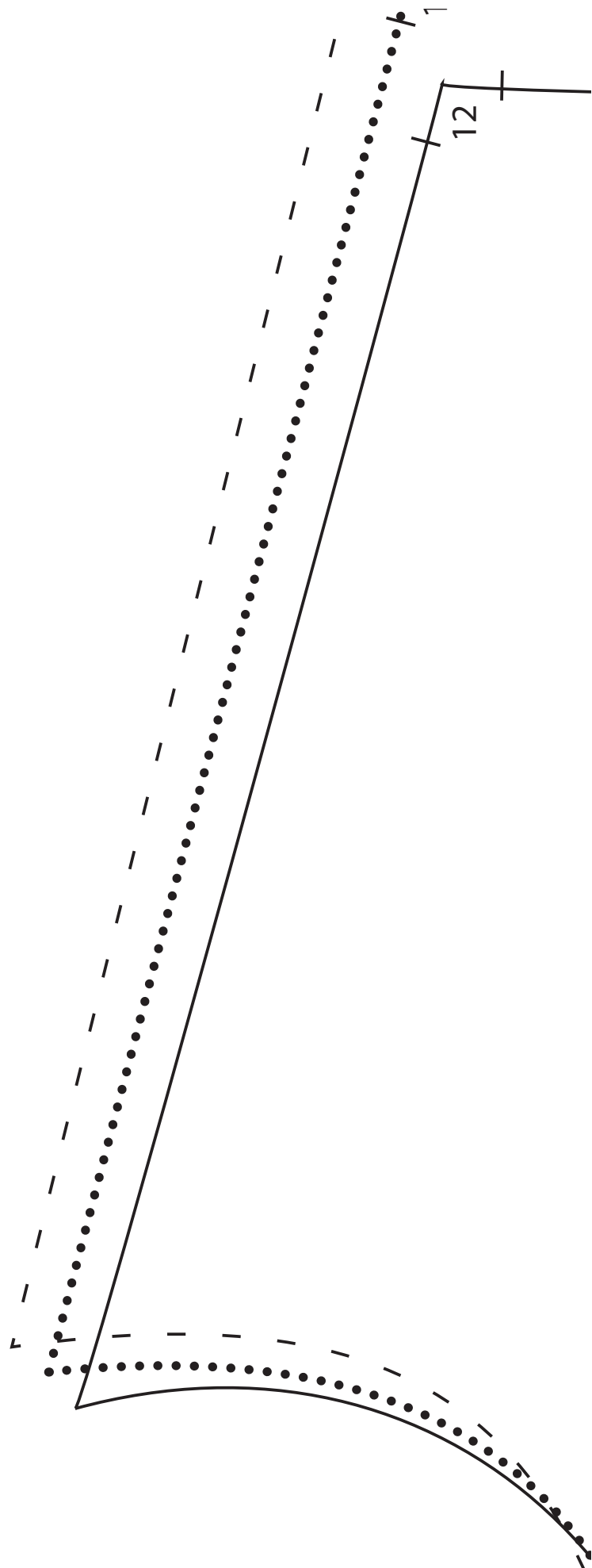


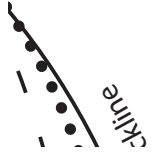


sleeve  
cut 2





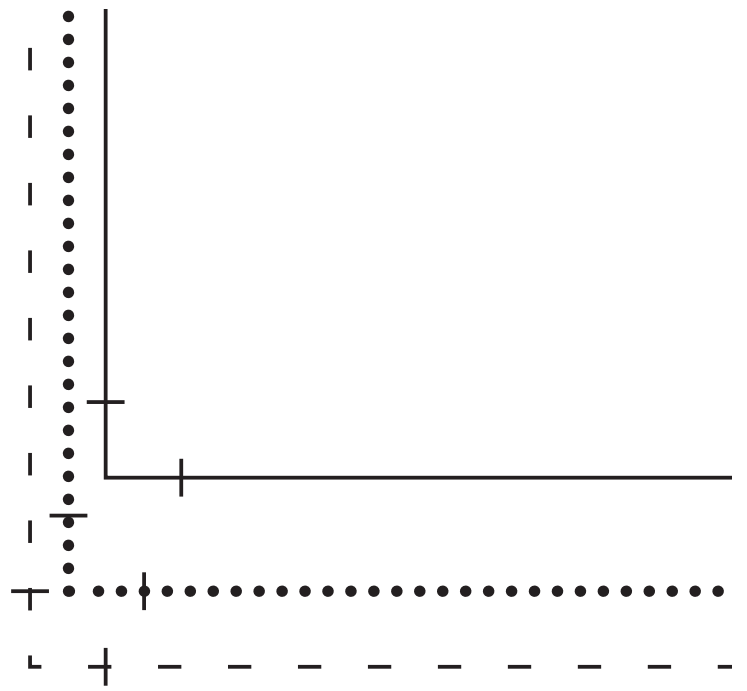
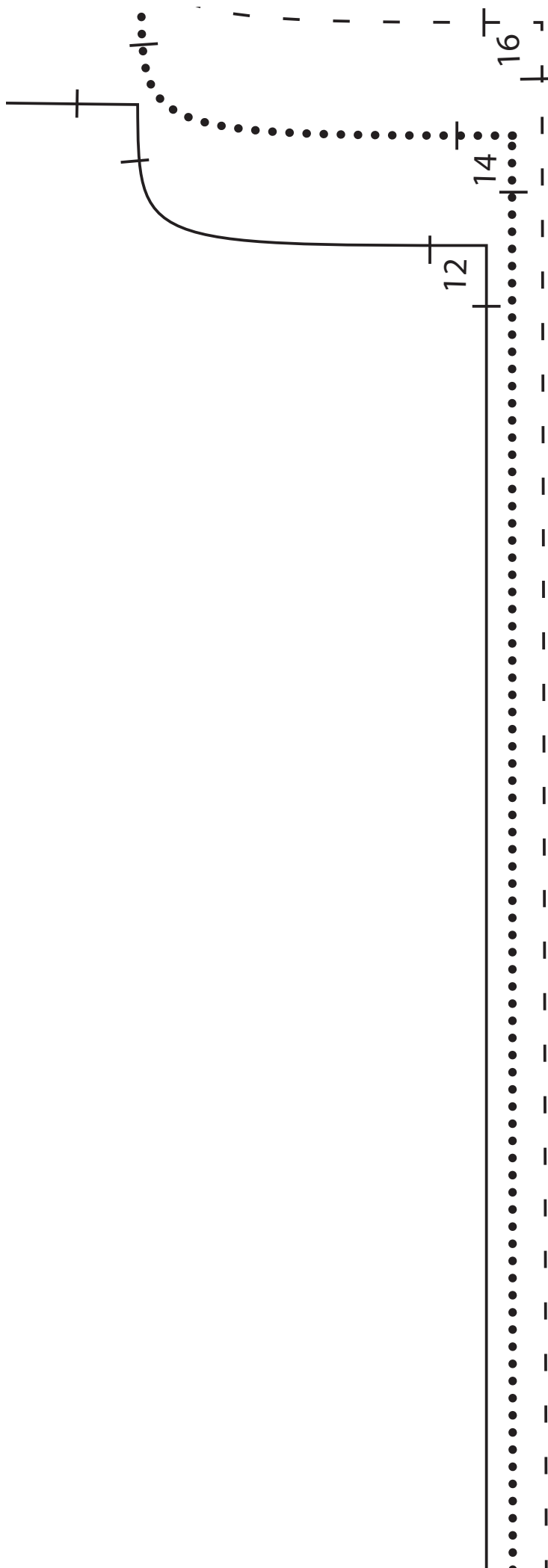




front bodice  
cut 1 pair

straight grain





## MEASUREMENTS FC TO CUT:

Skirt panels:

12- cut 2 pcs. 73cm x 76c

14- cut 2 pcs. 77.5cm x 1e

16- cut 2 pcs. 81.5cm x 1e

Neck & tie strips:

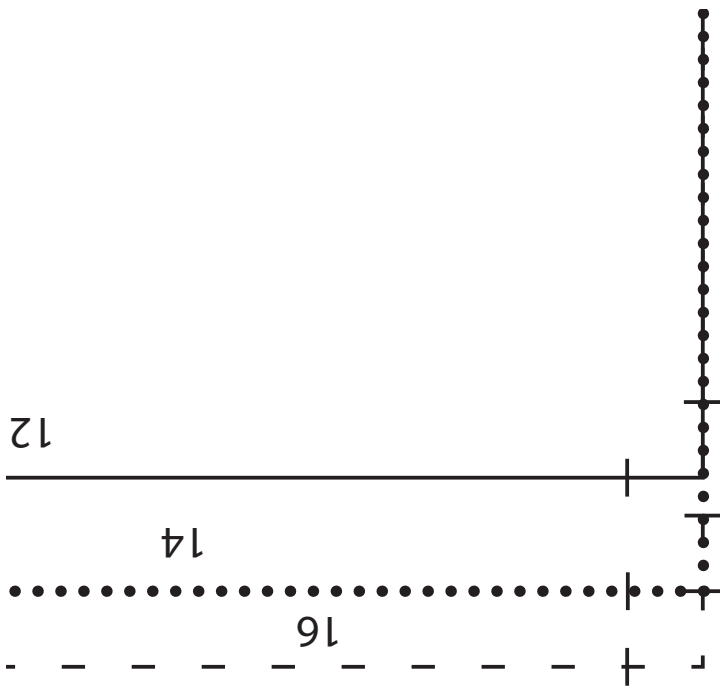
cut 1pc. on straight grain

128cm x 3cm

Sleeve bindings:

12- cut 2 pcs. 32cm x 3

14- cut 2 pcs. 33.5cm x



## OR OTHER PIECES

cm (or desired length + 3cm)

length + 3cm

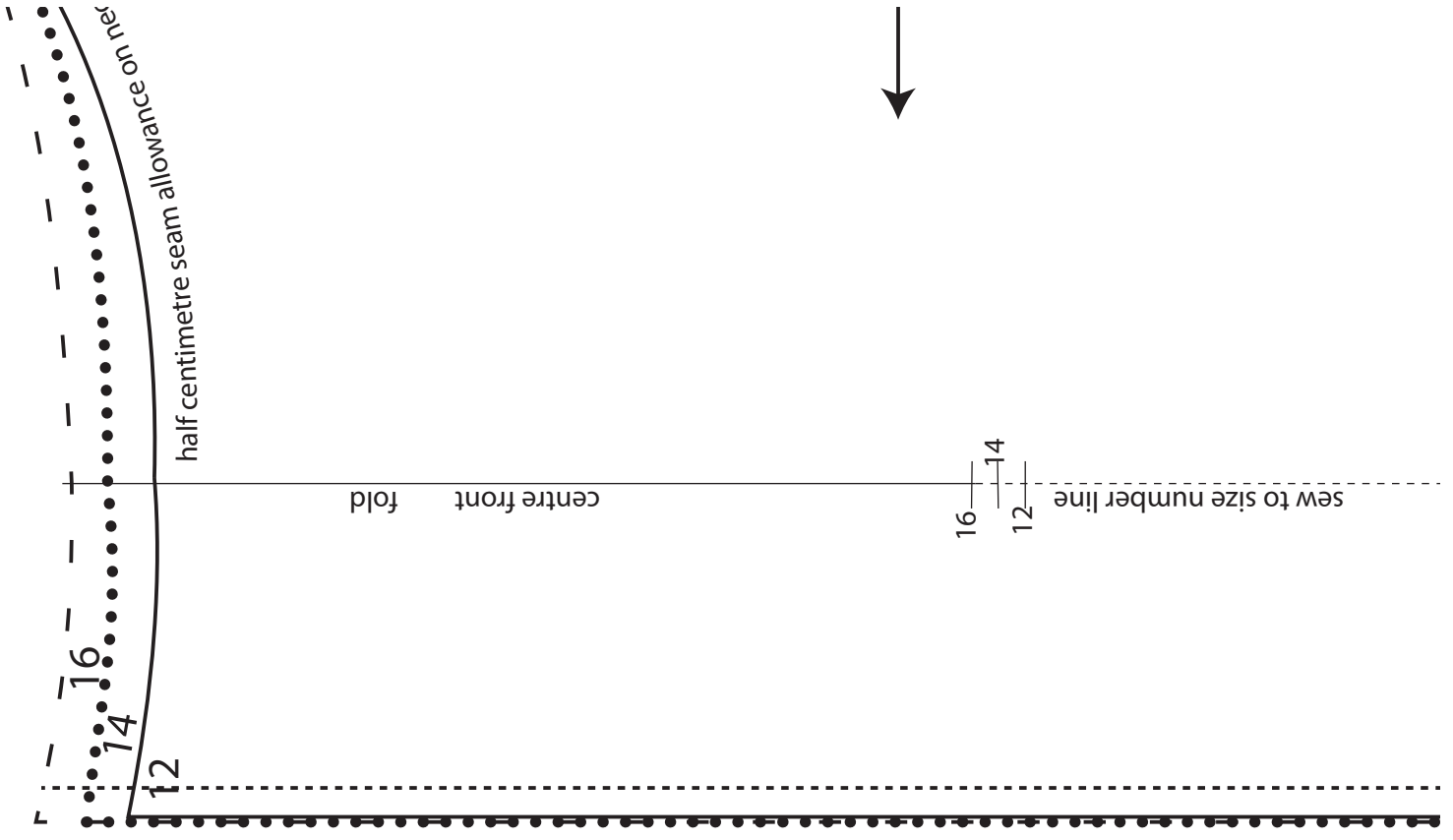
length + 3cm

1

cm

3cm





16- cut 2 pcs. 35cm x 3

12 \_\_\_\_\_ 92

14 ..... 97

16 - - - - - 10





cm

cm bust

cm bust

5cm bust